

Product datasheet for **TA335734**

ATG5 Rabbit Polyclonal Antibody

Product data:

Product Type:	Primary Antibodies
Applications:	IHC, WB
Recommended Dilution:	WB, IHC
Reactivity:	Human
Host:	Rabbit
Isotype:	IgG
Clonality:	Polyclonal
Immunogen:	The immunogen for Anti-ATG5 Antibody: synthetic peptide directed towards the C terminal of human ATG5. Synthetic peptide located within the following region: DPEDGEKKNQVMIHGIEPMLETPLQLWSEHLSYPDNFLHISIIPQPTD
Formulation:	Liquid. Purified antibody supplied in 1x PBS buffer with 0.09% (w/v) sodium azide and 2% sucrose. <i>Note that this product is shipped as lyophilized powder to China customers.</i>
Purification:	Affinity Purified
Conjugation:	Unconjugated
Storage:	Store at -20°C as received.
Stability:	Stable for 12 months from date of receipt.
Predicted Protein Size:	32 kDa
Gene Name:	autophagy related 5
Database Link:	NP_004840 Entrez Gene 9474 Human Q9H1Y0
Background:	ATG5 is required for autophagy. It conjugates to ATG12 and associates with isolation membrane to form cup-shaped isolation membrane and autophagosome. The conjugate detaches from the membrane immediately before or after autophagosome formation is completed. ATG5 may play an important role in the apoptotic process, possibly within the modified cytoskeleton. Its expression is a relatively late event in the apoptotic process, occurring downstream of caspase activity.



[View online »](#)

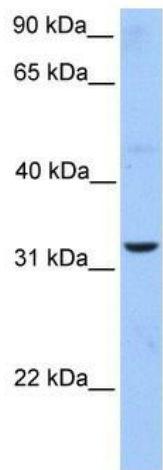
Synonyms: APG5; APG5-LIKE; APG5L; ASP; hAPG5

Note: Immunogen Sequence Homology: Dog: 100%; Pig: 100%; Rat: 100%; Horse: 100%; Human: 100%; Mouse: 100%; Bovine: 100%; Rabbit: 100%; Guinea pig: 100%; Zebrafish: 93%

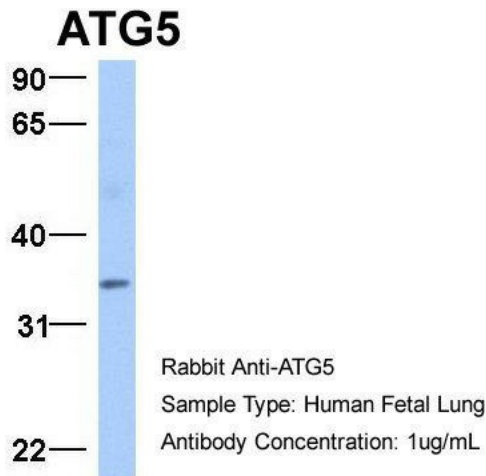
Protein Families: Druggable Genome

Protein Pathways: Regulation of autophagy, RIG-I-like receptor signaling pathway

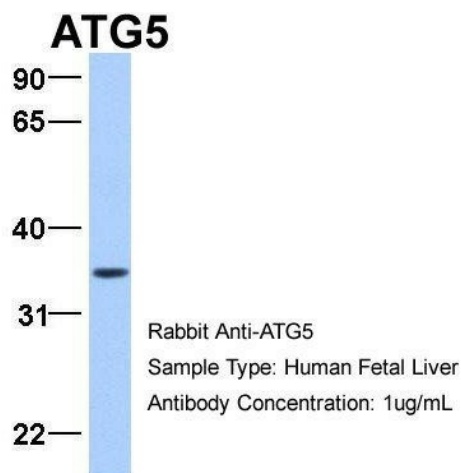
Product images:



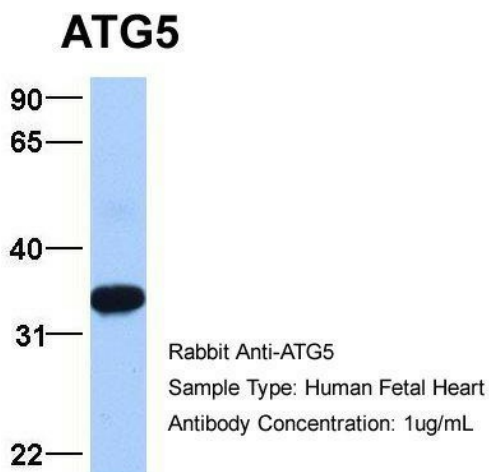
WB Suggested Anti-ATG5 Antibody Titration: 1 ug/ml; Positive Control: HepG2 cell lysate



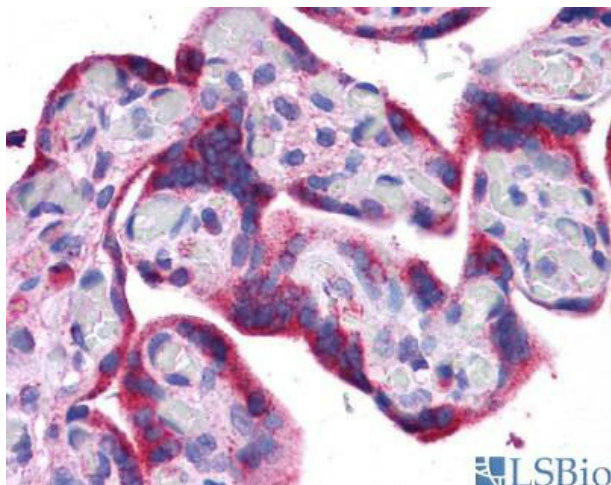
Host: Rabbit; Target Name: ATG5; Sample Tissue: Human Fetal Lung; Antibody Dilution: 1.0 ug/ml



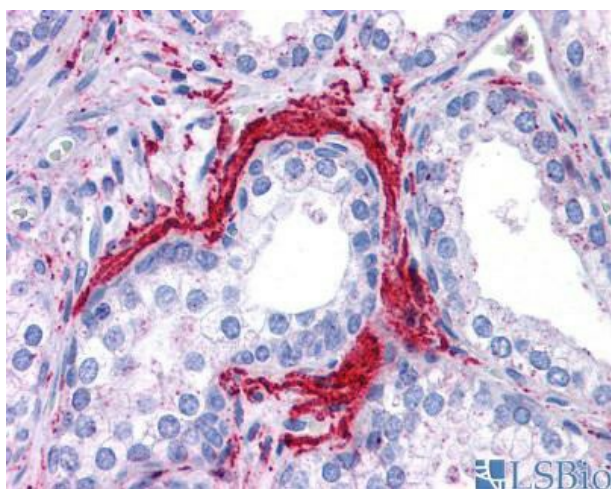
Host: Rabbit; Target Name: ATG5; Sample Tissue: Human Fetal Liver; Antibody Dilution: 1.0 ug/ml



Host: Rabbit; Target Name: ATG5; Sample Tissue: Human Fetal Heart; Antibody Dilution: 1.0 ug/ml



Human Placenta



Human Prostate