

Product datasheet for **TA335733**

IER2 Rabbit Polyclonal Antibody

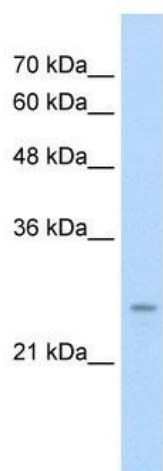
Product data:

Product Type:	Primary Antibodies
Applications:	IHC, WB
Recommended Dilution:	WB, IHC
Reactivity:	Human
Host:	Rabbit
Isotype:	IgG
Clonality:	Polyclonal
Immunogen:	The immunogen for Anti-IER2 Antibody: synthetic peptide directed towards the N terminal of human IER2. Synthetic peptide located within the following region: LYLSAKVEALEPEVSLPAALPSDPRLHPPREAESTAETATPDGEHPFPEP
Formulation:	Liquid. Purified antibody supplied in 1x PBS buffer with 0.09% (w/v) sodium azide and 2% sucrose. <i>Note that this product is shipped as lyophilized powder to China customers.</i>
Purification:	Affinity Purified
Conjugation:	Unconjugated
Storage:	Store at -20°C as received.
Stability:	Stable for 12 months from date of receipt.
Predicted Protein Size:	24 kDa
Gene Name:	immediate early response 2
Database Link:	NP_004898 Entrez Gene 9592 Human Q9BTL4
Background:	The function remains unknown.
Synonyms:	ETR101
Note:	Immunogen Sequence Homology: Human: 100%; Yeast: 77%
Protein Families:	Transcription Factors

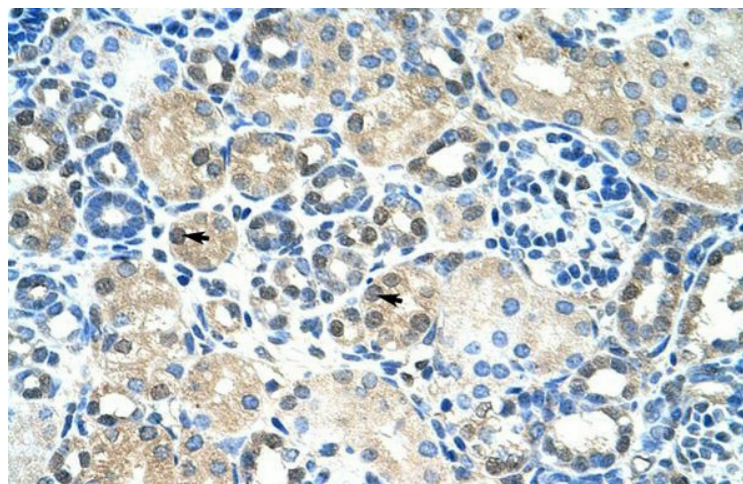


[View online »](#)

Product images:



WB Suggested Anti-IER2 Antibody Titration: 0.2-1 ug/ml; Positive Control: HepG2 cell lysate



Human kidney