

## Product datasheet for **TA335732**

### **MLT5 (TESMIN) Rabbit Polyclonal Antibody**

#### **Product data:**

Product Type:	Primary Antibodies
Applications:	WB
Recommended Dilution:	WB
Reactivity:	Human
Host:	Rabbit
Isotype:	IgG
Clonality:	Polyclonal
Immunogen:	The immunogen for Anti-MTL5 Antibody: synthetic peptide directed towards the N terminal of human MTL5. Synthetic peptide located within the following region: EAYLGPADPKPEVLHAFNPALGADCKGQVKAKLAGGSDGGELLGEYPGI
Formulation:	Liquid. Purified antibody supplied in 1x PBS buffer with 0.09% (w/v) sodium azide and 2% sucrose.
Purification:	Affinity Purified
Conjugation:	Unconjugated
Storage:	Store at -20°C as received.
Stability:	Stable for 12 months from date of receipt.
Predicted Protein Size:	56 kDa
Gene Name:	testis expressed metallothionein like protein
Database Link:	<a href="#">NP_004914</a> <a href="#">Entrez Gene 9633 Human</a> <a href="#">Q9Y4I5</a>



[View online »](#)

**Background:**

Metallothionein proteins are highly conserved low-molecular-weight cysteine-rich proteins that are induced by and bind to heavy metal ions and have no enzymatic activity. They may play a central role in the regulation of cell growth and differentiation and are involved in spermatogenesis. MTL5 is a metallothionein-like protein which has been shown to be expressed differentially in mouse testis and ovary. Metallothionein proteins are highly conserved low-molecular-weight cysteine-rich proteins that are induced by and bind to heavy metal ions and have no enzymatic activity. They may play a central role in the regulation of cell growth and differentiation and are involved in spermatogenesis. This gene encodes a metallothionein-like protein which has been shown to be expressed differentially in mouse testis and ovary. Two transcript variants encoding different isoforms have been found for this gene.

**Synonyms:**

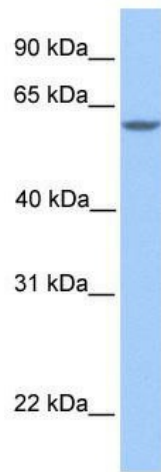
CXCDC2; MTL5; MTLT

**Note:**

Immunogen Sequence Homology: Human: 100%; Dog: 83%

**Protein Families:**

Druggable Genome

**Product images:**

WB Suggested Anti-MTL5 Antibody Titration: 0.2-1 ug/ml; Positive Control: Human brain