

## Product datasheet for **TA335731**

### CTNS Rabbit Polyclonal Antibody

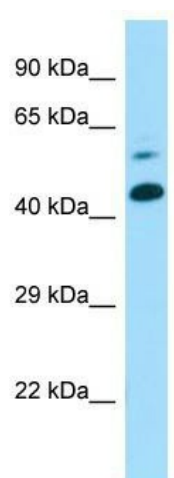
#### Product data:

Product Type:	Primary Antibodies
Applications:	WB
Recommended Dilution:	WB
Reactivity:	Mouse
Host:	Rabbit
Isotype:	IgG
Clonality:	Polyclonal
Immunogen:	The immunogen for Anti-Ctns Antibody is: synthetic peptide directed towards the middle region of Mouse Ctns. Synthetic peptide located within the following region: GQVTVFLHGNHNSNQTCPRI RFLVIHSRIVSIINQVIGWIYFMAWSVSFYP
Formulation:	Liquid. Purified antibody supplied in 1x PBS buffer with 0.09% (w/v) sodium azide and 2% sucrose. <i>Note that this product is shipped as lyophilized powder to China customers.</i>
Purification:	Affinity Purified
Conjugation:	Unconjugated
Storage:	Store at -20°C as received.
Stability:	Stable for 12 months from date of receipt.
Predicted Protein Size:	42 kDa
Database Link:	<a href="#">NP_004928</a> <a href="#">Entrez Gene 83429 Mouse</a>
Background:	Ctns is thought to transport cystine out of lysosomes.
Synonyms:	CTNS-LSB; PQLC4
Note:	Immunogen Sequence Homology: Horse: 100%; Human: 100%; Dog: 93%; Mouse: 93%; Bovine: 93%; Pig: 92%; Rat: 92%; Rabbit: 85%
Protein Families:	Druggable Genome, Transmembrane
Protein Pathways:	Lysosome



[View online »](#)

## Product images:



Host: Rabbit; Target Name: Ctns; Sample Tissue: Mouse Lung lysates; Antibody Dilution: 1.0 ug/ml