

Product datasheet for TA335730

NRF1 Rabbit Polyclonal Antibody

Product data:

Product Type:	Primary Antibodies
Applications:	IHC, WB
Recommended Dilution:	WB, IHC
Reactivity:	Human, Mouse
Host:	Rabbit
Isotype:	IgG
Clonality:	Polyclonal
Immunogen:	The immunogen for Anti-NRF1 Antibody is: synthetic peptide directed towards the middle region of Human NRF1. Synthetic peptide located within the following region: WATLQGGEMTIQTTQASEATQAVASLAEAAVAASQEMQQGATVTMALNSE
Formulation:	Liquid. Purified antibody supplied in 1x PBS buffer with 0.09% (w/v) sodium azide and 2% sucrose. <i>Note that this product is shipped as lyophilized powder to China customers.</i>
Purification:	Affinity Purified
Conjugation:	Unconjugated
Storage:	Store at -20°C as received.
Stability:	Stable for 12 months from date of receipt.
Predicted Protein Size:	53 kDa
Gene Name:	nuclear respiratory factor 1
Database Link:	NP_005002 Entrez Gene 18181 Mouse Entrez Gene 4899 Human Q16656
Background:	This protein homodimerizes and functions as a transcription factor which activates the expression of some key metabolic genes regulating cellular growth and nuclear genes required for respiration, heme biosynthesis, and mitochondrial DNA transcription and replication. The protein has also been associated with the regulation of neurite outgrowth.
Synonyms:	ALPHA-PAL



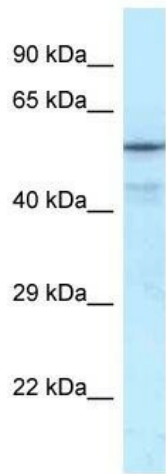
[View online »](#)

Note: Immunogen Sequence Homology: Dog: 100%; Pig: 100%; Rat: 100%; Horse: 100%; Human: 100%; Mouse: 100%; Bovine: 100%; Rabbit: 100%; Zebrafish: 100%; Guinea pig: 100%

Protein Families: Transcription Factors

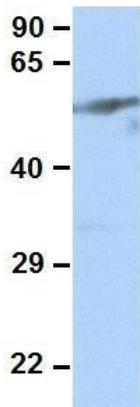
Protein Pathways: Huntington's disease

Product images:



WB Suggested Anti-NRF1 Antibody Titration: 0.2-1 ug/ml; ELISA Titer: 1:62500; Positive Control: Transfected 293T

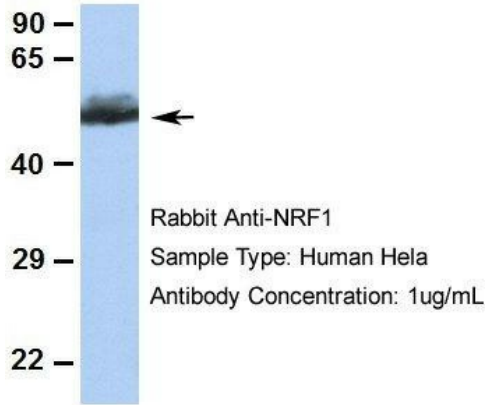
NRF1



Rabbit Anti-NRF1
Sample Type: Human 293T
Antibody Concentration: 1ug/mL

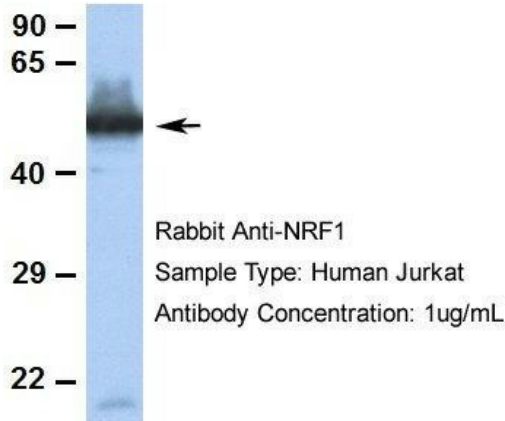
Human 293T There is BioGPS gene expression data showing that NRF1 is expressed in HEK293T

NRF1

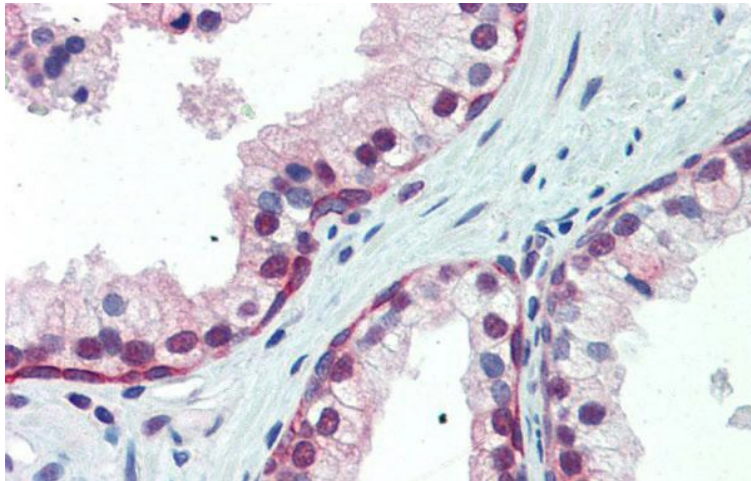


Human HeLa There is BioGPS gene expression data showing that NRF1 is expressed in HeLa

NRF1



Human Jurkat There is BioGPS gene expression data showing that NRF1 is expressed in Jurkat



Human Prostate