

Product datasheet for TA335729

PDE1A Rabbit Polyclonal Antibody

Product data:

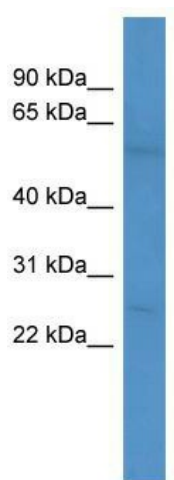
Product Type:	Primary Antibodies
Applications:	WB
Recommended Dilution:	WB
Reactivity:	Human
Host:	Rabbit
Isotype:	IgG
Clonality:	Polyclonal
Immunogen:	The immunogen for Anti-PDE1A Antibody: synthetic peptide directed towards the C terminal of human PDE1A. Synthetic peptide located within the following region: AVDLKSFKNLVDIIQQNKERWKELAAQGESDLHKNSDLVNAEEKHDET
Formulation:	Liquid. Purified antibody supplied in 1x PBS buffer with 0.09% (w/v) sodium azide and 2% sucrose. <i>Note that this product is shipped as lyophilized powder to China customers.</i>
Purification:	Affinity Purified
Conjugation:	Unconjugated
Storage:	Store at -20°C as received.
Stability:	Stable for 12 months from date of receipt.
Predicted Protein Size:	60 kDa
Gene Name:	phosphodiesterase 1A
Database Link:	NP_005010 Entrez Gene 5136 Human P54750
Background:	PDE1A belongs to the cyclic nucleotide phosphodiesterase family. It has a higher affinity for cGMP than for cAMP. The exact function of PDE1A remains unknown.
Synonyms:	CAM-PDE-1A; HCAM-1; HCAM1; HSPDE1A
Note:	Immunogen Sequence Homology: Human: 100%; Dog: 93%; Rat: 93%; Mouse: 86%
Protein Families:	Druggable Genome



[View online »](#)

Protein Pathways: Calcium signaling pathway, Progesterone-mediated oocyte maturation, Purine metabolism, Taste transduction

Product images:



WB Suggested Anti-PDE1A Antibody Titration: 0.2-1 ug/ml; ELISA Titer: 1: 312500; Positive Control: Jurkat cell lysate