

Product datasheet for **TA335728**

PDE1C Rabbit Polyclonal Antibody

Product data:

Product Type:	Primary Antibodies
Applications:	WB
Recommended Dilution:	WB
Reactivity:	Human
Host:	Rabbit
Isotype:	IgG
Clonality:	Polyclonal
Immunogen:	The immunogen for Anti-PDE1C Antibody: synthetic peptide directed towards the N terminal of human PDE1C. Synthetic peptide located within the following region: DLKKNIEYAASVLEAVYIDETRRLLDTEDELSDIQTDSVPSEVRDWLAST
Formulation:	Liquid. Purified antibody supplied in 1x PBS buffer with 0.09% (w/v) sodium azide and 2% sucrose. <i>Note that this product is shipped as lyophilized powder to China customers.</i>
Purification:	Affinity Purified
Conjugation:	Unconjugated
Storage:	Store at -20°C as received.
Stability:	Stable for 12 months from date of receipt.
Predicted Protein Size:	59 kDa
Gene Name:	phosphodiesterase 1C
Database Link:	NP_005011 Entrez Gene 5137 Human Q14123
Background:	PDE1A belongs to the cyclic nucleotide phosphodiesterase family. It has a higher affinity for cGMP than for cAMP. The exact function of PDE1A remains unknown.
Synonyms:	cam-PDE 1C; hCam-3; Hcam3
Note:	Immunogen Sequence Homology: Dog: 100%; Pig: 100%; Rat: 100%; Horse: 100%; Human: 100%; Mouse: 100%; Bovine: 100%; Rabbit: 100%; Zebrafish: 100%; Guinea pig: 100%

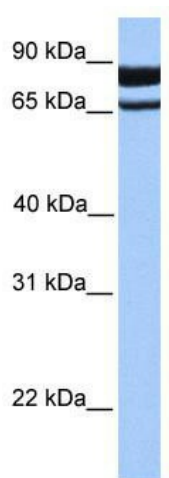


[View online »](#)

Protein Families: Druggable Genome

Protein Pathways: Calcium signaling pathway, Olfactory transduction, Progesterone-mediated oocyte maturation, Purine metabolism

Product images:



WB Suggested Anti-PDE1C Antibody Titration: 0.2-1 ug/ml; ELISA Titer: 1: 1562500; Positive Control: HepG2 cell lysate