

## Product datasheet for **TA335727**

### RBBP5 Rabbit Polyclonal Antibody

#### Product data:

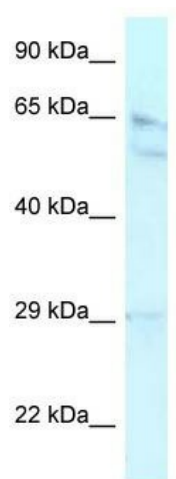
Product Type:	Primary Antibodies
Applications:	WB
Recommended Dilution:	WB
Reactivity:	Human
Host:	Rabbit
Isotype:	IgG
Clonality:	Polyclonal
Immunogen:	The immunogen for Anti-RBBP5 Antibody: synthetic peptide directed towards the middle region of human RBBP5. Synthetic peptide located within the following region: NQVENWSAFAPDFKELDENVEYEERESEFDIEDKSEPEQTGADAAEDE
Formulation:	Liquid. Purified antibody supplied in 1x PBS buffer with 0.09% (w/v) sodium azide and 2% sucrose. <i>Note that this product is shipped as lyophilized powder to China customers.</i>
Purification:	Affinity Purified
Conjugation:	Unconjugated
Storage:	Store at -20°C as received.
Stability:	Stable for 12 months from date of receipt.
Predicted Protein Size:	59 kDa
Gene Name:	RB binding protein 5, histone lysine methyltransferase complex subunit
Database Link:	<a href="#">NP_005048</a> <a href="#">Entrez Gene 5929 Human</a> <a href="#">Q15291</a>
Background:	RBBP5 contains 6 WD repeats. It binds preferentially to underphosphorylated retinoblastoma protein.
Synonyms:	RBQ3; SWD1
Note:	Immunogen Sequence Homology: Dog: 100%; Pig: 100%; Rat: 100%; Horse: 100%; Human: 100%; Mouse: 100%; Bovine: 100%; Rabbit: 100%; Zebrafish: 100%; Yeast: 83%



[View online »](#)

Protein Families: Druggable Genome

### Product images:



WB Suggested Anti-RBBP5 Antibody Titration: 0.2-1 ug/ml; ELISA Titer: 1:12500; Positive Control: HepG2 cell lysate