

Product datasheet for **TA335726**

RBBP5 Rabbit Polyclonal Antibody

Product data:

Product Type:	Primary Antibodies
Applications:	WB
Recommended Dilution:	WB
Reactivity:	Human
Host:	Rabbit
Isotype:	IgG
Clonality:	Polyclonal
Immunogen:	The immunogen for Anti-RBBP5 Antibody: synthetic peptide directed towards the middle region of human RBBP5. Synthetic peptide located within the following region: GASSEKKRQSSADGSQPPKKPKTTNIELQGVPNDEVHPLLGVKGDGKSK
Formulation:	Liquid. Purified antibody supplied in 1x PBS buffer with 0.09% (w/v) sodium azide and 2% sucrose. <i>Note that this product is shipped as lyophilized powder to China customers.</i>
Purification:	Affinity Purified
Conjugation:	Unconjugated
Storage:	Store at -20°C as received.
Stability:	Stable for 12 months from date of receipt.
Predicted Protein Size:	59 kDa
Gene Name:	RB binding protein 5, histone lysine methyltransferase complex subunit
Database Link:	NP_005048 Entrez Gene 5929 Human Q15291



[View online »](#)

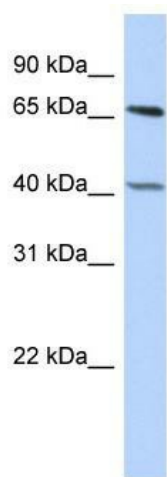
Background: RBBP5 contains 6 WD repeats. It binds preferentially to underphosphorylated retinoblastoma protein. The protein encoded by this gene is a ubiquitously expressed nuclear protein and belongs to a highly conserved subfamily of WD-repeat proteins. It is found among several proteins that bind directly to retinoblastoma protein, which regulates cell proliferation. The encoded protein interacts preferentially with the underphosphorylated retinoblastoma protein via the E1A-binding pocket B. PRIMARYREFSEQ_SPAN PRIMARY_IDENTIFIER
PRIMARY_SPAN COMP 1-1 AU099032.1 13-13 2-26 CD710496.1 39-63 27-567 BC053856.1 17-557 568-1604 BC037284.2 540-1576 1605-2978 BC053856.1 1595-2968 2979-2979 BC037284.2 2838-2838 2980-2992 AA235403.1 1-13 2993-3136 BC037284.2 2851-2994 3137-3318 BC053856.1 3125-3306 3319-3334 BC037284.2 3177-3192 3335-3342 BG392257.1 177-184 3343-3587 BC037284.2 3200-3444 3588-3683 CB133829.1 341-436

Synonyms: RBQ3; SWD1

Note: Immunogen Sequence Homology: Dog: 100%; Pig: 100%; Rat: 100%; Human: 100%; Mouse: 100%; Bovine: 100%; Rabbit: 100%; Horse: 92%

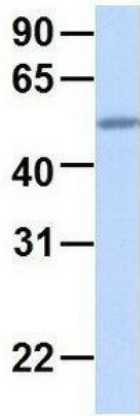
Protein Families: Druggable Genome

Product images:



WB Suggested Anti-RBBP5 Antibody Titration: 0.2-1 ug/ml; ELISA Titer: 1:12500; Positive Control: HepG2 cell lysate

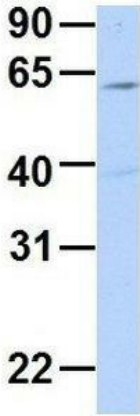
RBBP5



Rabbit Anti-RBBP5
Sample Type: Human Adult Placenta
Antibody Concentration: 1ug/mL

Host: Rabbit; Target Name: RBBP5; Sample Tissue: Human Adult Placenta; Antibody Dilution: 1.0 ug/ml

RBBP5



Rabbit Anti-RBBP5
Sample Type: Human MCF7
Antibody Concentration: 1ug/mL

Host: Rabbit; Target Name: RBBP5; Sample Tissue: Human MCF7; Antibody Dilution: 1.0 ug/ml; RBBP5 is supported by BioGPS gene expression data to be expressed in MCF7