

Product datasheet for **TA335718**

BMI1 Rabbit Polyclonal Antibody

Product data:

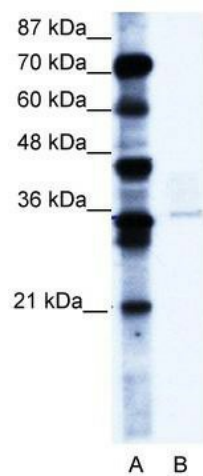
| | |
|-------------------------|---|
| Product Type: | Primary Antibodies |
| Applications: | WB |
| Recommended Dilution: | WB |
| Reactivity: | Human |
| Host: | Rabbit |
| Isotype: | IgG |
| Clonality: | Polyclonal |
| Immunogen: | The immunogen for Anti-PCGF4 Antibody: synthetic peptide directed towards the C terminal of human PCGF4. Synthetic peptide located within the following region: TPVQSPHPQFPHISSTMNGTNSNSPSGNHQSSFANRPRKSSVNGSSATSSG |
| Formulation: | Liquid. Purified antibody supplied in 1x PBS buffer with 0.09% (w/v) sodium azide and 2% sucrose. <i>Note that this product is shipped as lyophilized powder to China customers.</i> |
| Purification: | Affinity Purified |
| Conjugation: | Unconjugated |
| Storage: | Store at -20°C as received. |
| Stability: | Stable for 12 months from date of receipt. |
| Predicted Protein Size: | 37 kDa |
| Gene Name: | BMI1 proto-oncogene, polycomb ring finger |
| Database Link: | NP_005171 Entrez Gene 648 Human P35226 |
| Background: | PCGF4 regulates telomerase expression in MECs and plays a role in the development of human breast cancer. |
| Synonyms: | BMI1; FLVI2; PCGF4; RNF51 |
| Note: | Immunogen Sequence Homology: Dog: 100%; Pig: 100%; Horse: 100%; Human: 100%; Bovine: 100%; Rabbit: 100%; Guinea pig: 100%; Rat: 93%; Mouse: 86%; Yeast: 83% |



[View online »](#)

Protein Families: Druggable Genome, ES Cell Differentiation/IPS, Transcription Factors

Product images:



WB Suggested Anti-PCGF4 Antibody Titration: 0.2-1 ug/ml; ELISA Titer: 1:312500; Positive Control: A172 cell lysate; BMI1 is supported by BioGPS gene expression data to be expressed in A172