

## Product datasheet for TA335716

### PDHA2 Rabbit Polyclonal Antibody

#### Product data:

Product Type:	Primary Antibodies
Applications:	WB
Recommended Dilution:	WB
Reactivity:	Human
Host:	Rabbit
Isotype:	IgG
Clonality:	Polyclonal
Immunogen:	The immunogen for Anti-PDHA2 Antibody: synthetic peptide directed towards the N terminal of human PDHA2. Synthetic peptide located within the following region: RMEKADQLYKQKFIRGFCHLCDGQEACCVGLEAGINPSDHVITSYRAHG
Formulation:	Liquid. Purified antibody supplied in 1x PBS buffer with 0.09% (w/v) sodium azide and 2% sucrose. <i>Note that this product is shipped as lyophilized powder to China customers.</i>
Purification:	Affinity Purified
Conjugation:	Unconjugated
Storage:	Store at -20°C as received.
Stability:	Stable for 12 months from date of receipt.
Predicted Protein Size:	43 kDa
Gene Name:	pyruvate dehydrogenase (lipoamide) alpha 2
Database Link:	<a href="#">NP_005381</a> <a href="#">Entrez Gene 5161 Human</a> <a href="#">P29803</a>
Background:	The pyruvate dehydrogenase complex catalyzes the overall conversion of pyruvate to acetyl-CoA and CO <sub>2</sub> . It contains multiple copies of three enzymatic components: pyruvate dehydrogenase (E1), dihydrolipoamide acetyltransferase (E2) and lipoamide dehydrogenase (E3).
Synonyms:	PDHAL

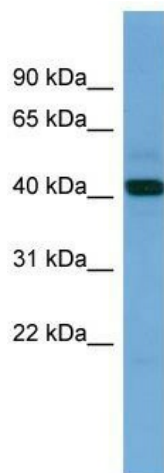


[View online »](#)

**Note:** Immunogen Sequence Homology: Human: 100%; Rabbit: 100%; Mouse: 93%; Bovine: 93%; Rat: 86%; Horse: 85%; Dog: 79%; Pig: 79%; Zebrafish: 79%; Guinea pig: 79%

**Protein Pathways:** Butanoate metabolism, Citrate cycle (TCA cycle), Glycolysis / Gluconeogenesis, Metabolic pathways, Pyruvate metabolism, Valine, leucine and isoleucine biosynthesis

**Product images:**



WB Suggested Anti-PDHA2 Antibody Titration:  
0.2-1 ug/ml; ELISA Titer: 1: 1562500; Positive  
Control: Human Placenta