

Product datasheet for TA335712

Chromosome X open reading frame 6 (MAMLD1) Rabbit Polyclonal Antibody

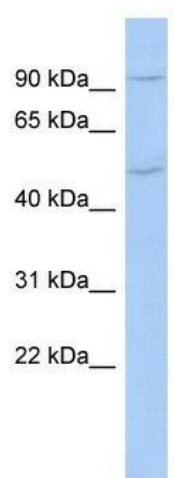
Product data:

Product Type:	Primary Antibodies
Applications:	WB
Recommended Dilution:	WB
Reactivity:	Human
Host:	Rabbit
Isotype:	IgG
Clonality:	Polyclonal
Immunogen:	The immunogen for Anti-CXorf6 Antibody: synthetic peptide directed towards the N terminal of human CXorf6. Synthetic peptide located within the following region: SPFVVPQTTEVGLKGPVPPYEKINSVPAVDQELQELLEELTKIQDPSPN
Formulation:	Liquid. Purified antibody supplied in 1x PBS buffer with 0.09% (w/v) sodium azide and 2% sucrose. <i>Note that this product is shipped as lyophilized powder to China customers.</i>
Purification:	Affinity Purified
Conjugation:	Unconjugated
Storage:	Store at -20°C as received.
Stability:	Stable for 12 months from date of receipt.
Predicted Protein Size:	83 kDa
Gene Name:	mastermind like domain containing 1
Database Link:	NP_005482 Entrez Gene 10046 Human Q13495
Background:	CXorf6 transactivates the HES3 promoter independently of NOTCH proteins. HES3 is a non-canonical NOTCH target gene which lacks binding sites for RBPJ.
Synonyms:	CG1; CXorf6; F18; HYSP2
Note:	Immunogen Sequence Homology: Human: 100%; Rabbit: 100%; Dog: 93%; Pig: 93%; Rat: 93%; Horse: 93%; Mouse: 93%; Guinea pig: 93%; Bovine: 86%; Zebrafish: 77%



[View online »](#)

Product images:



WB Suggested Anti-CXorf6 Antibody Titration: 0.2-1 ug/ml; ELISA Titer: 1:62500; Positive Control: COLO205 cell lysate