

## Product datasheet for **TA335711**

### Chromosome X open reading frame 6 (MAMLD1) Rabbit Polyclonal Antibody

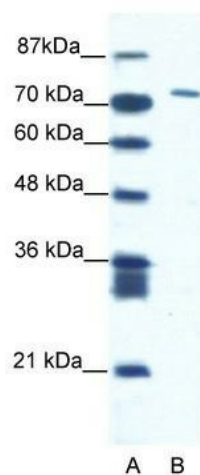
#### Product data:

Product Type:	Primary Antibodies
Applications:	WB
Recommended Dilution:	WB
Reactivity:	Human
Host:	Rabbit
Isotype:	IgG
Clonality:	Polyclonal
Immunogen:	The immunogen for Anti-CXORF6 Antibody: synthetic peptide directed towards the N terminal of human CXORF6. Synthetic peptide located within the following region: LEELTKIQDPSPNELDLEKILGTKPEEPLVLDHPQATLSTTPKPSVQMSH
Formulation:	Liquid. Purified antibody supplied in 1x PBS buffer with 0.09% (w/v) sodium azide and 2% sucrose.
Purification:	Protein A purified
Conjugation:	Unconjugated
Storage:	Store at -20°C as received.
Stability:	Stable for 12 months from date of receipt.
Predicted Protein Size:	74 kDa
Gene Name:	mastermind like domain containing 1
Database Link:	<a href="#">NP_005482</a> <a href="#">Entrez Gene 10046 Human</a> <a href="#">Q13495</a>
Background:	CXorf6 is a protein predicted based on an ORF found in chromosome 14
Synonyms:	CG1; CXorf6; F18; HYSP2
Note:	Immunogen Sequence Homology: Human: 100%; Dog: 86%; Pig: 86%; Horse: 86%; Rabbit: 86%; Rat: 79%; Mouse: 79%; Guinea pig: 79%



[View online »](#)

## Product images:



WB Suggested Anti-CXORF6 Antibody Titration:  
1.25 ug/ml; ELISA Titer: 1:1562500; Positive  
Control: Jurkat cell lysate