

## Product datasheet for **TA335710**

### HSPA1L Rabbit Polyclonal Antibody

#### Product data:

Product Type:	Primary Antibodies
Applications:	WB
Recommended Dilution:	WB
Reactivity:	Human, Rat, Lamprey
Host:	Rabbit
Isotype:	IgG
Clonality:	Polyclonal
Immunogen:	The immunogen for Anti-HSPA1L Antibody: synthetic peptide directed towards the C terminal of human HSPA1L. Synthetic peptide located within the following region: DEFDHRKELEQMCNPIITKLYQGGCTGPACGTGYVPRPATGPTIEEVD
Formulation:	Liquid. Purified antibody supplied in 1x PBS buffer with 0.09% (w/v) sodium azide and 2% sucrose. <i>Note that this product is shipped as lyophilized powder to China customers.</i>
Purification:	Affinity Purified
Conjugation:	Unconjugated
Storage:	Store at -20°C as received.
Stability:	Stable for 12 months from date of receipt.
Predicted Protein Size:	70 kDa
Gene Name:	heat shock protein family A (Hsp70) member 1 like
Database Link:	<a href="#">NP_005518</a> <a href="#">Entrez Gene 24963 Rat</a> <a href="#">Entrez Gene 3305 Human</a> <a href="#">P34931</a>



[View online »](#)

**Background:**

HSPA1L is a 70kDa heat shock protein. In conjunction with other heat shock proteins, this protein stabilizes existing proteins against aggregation and mediates the folding of newly translated proteins in the cytosol and in organelles. This gene encodes a 70kDa heat shock protein. In conjunction with other heat shock proteins, this protein stabilizes existing proteins against aggregation and mediates the folding of newly translated proteins in the cytosol and in organelles. The gene is located in the major histocompatibility complex class III region, in a cluster with two closely related genes which also encode isoforms of the 70kDa heat shock protein. Publication Note: This RefSeq record includes a subset of the publications that are available for this gene. Please see the Entrez Gene record to access additional publications.

**Synonyms:**

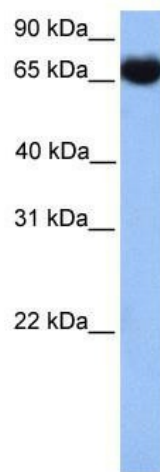
HSP70-1L; HSP70-HOM; HSP70T; hum70t

**Note:**

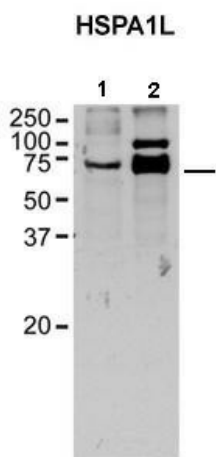
Immunogen Sequence Homology: Human: 100%; Dog: 86%; Pig: 86%; Rat: 86%; Goat: 86%; Horse: 86%; Mouse: 86%; Bovine: 86%

**Protein Pathways:**

Antigen processing and presentation, Endocytosis, MAPK signaling pathway, Spliceosome

**Product images:**

WB Suggested Anti-HSPA1L Antibody Titration:  
0.2-1 ug/ml; Positive Control: Jurkat cell lysate



Sample Type: 1. Lamprey CNS (20ug); 2. Rat Brain Lysate (20ug); Primary Dilution: 1: 1000; Secondary Antibody: Goat anti-Rabbit HRP; Secondary Dilution: 1: 4000; Image Submitted by: Jennifer Morgan, PhD & David Busch; University of Texas in Austin