

Product datasheet for **TA335709**

LPP Rabbit Polyclonal Antibody

Product data:

Product Type:	Primary Antibodies
Applications:	WB
Recommended Dilution:	WB
Reactivity:	Human
Host:	Rabbit
Isotype:	IgG
Clonality:	Polyclonal
Immunogen:	The immunogen for Anti-LPP Antibody: synthetic peptide directed towards the N terminal of human LPP. Synthetic peptide located within the following region: GKTLEERRSSLDAEIDSLTSILADLECSSPYKPRPPQSSTGSTASPPVST
Formulation:	Liquid. Purified antibody supplied in 1x PBS buffer with 0.09% (w/v) sodium azide and 2% sucrose. <i>Note that this product is shipped as lyophilized powder to China customers.</i>
Purification:	Affinity Purified
Conjugation:	Unconjugated
Storage:	Store at -20°C as received.
Stability:	Stable for 12 months from date of receipt.
Predicted Protein Size:	67 kDa
Gene Name:	LIM domain containing preferred translocation partner in lipoma
Database Link:	NP_005569 Entrez Gene 4026 Human Q93052
Background:	LPP may play a structural role at sites of cell adhesion in maintaining cell shape and motility. In addition to these structural functions, it may also be implicated in signaling events and activation of gene transcription. LPP may be involved in signal transduction from cell adhesion sites to the nucleus allowing successful integration of signals arising from soluble factors and cell-cell adhesion sites. LPP is also suggested to serve as a scaffold protein upon which distinct protein complexes are assembled in the cytoplasm and in the nucleus.

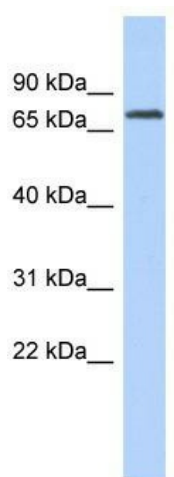


[View online »](#)

Synonyms: DKFZp779O0231; FLJ30652; FLJ41512

Note: Immunogen Sequence Homology: Human: 100%; Mouse: 100%; Dog: 92%; Horse: 92%; Rabbit: 92%; Bovine: 81%

Product images:



WB Suggested Anti-LPP Antibody Titration: 0.2-1 ug/ml; ELISA Titer: 1: 312500; Positive Control: COLO205 cell lysate. LPP is supported by BioGPS gene expression data to be expressed in COLO205