

Product datasheet for **TA335707**

COLQ Rabbit Polyclonal Antibody

Product data:

Product Type:	Primary Antibodies
Applications:	WB
Recommended Dilution:	WB
Reactivity:	Human
Host:	Rabbit
Isotype:	IgG
Clonality:	Polyclonal
Immunogen:	The immunogen for Anti-COLQ Antibody: synthetic peptide directed towards the N terminal of human COLQ. Synthetic peptide located within the following region: LQLFFLSIVSQPTFINSVLPISAALPSLDQKKRGGHKACCLLTPPPPPLF
Formulation:	Liquid. Purified antibody supplied in 1x PBS buffer with 0.09% (w/v) sodium azide and 2% sucrose. <i>Note that this product is shipped as lyophilized powder to China customers.</i>
Purification:	Affinity Purified
Conjugation:	Unconjugated
Storage:	Store at -20°C as received.
Stability:	Stable for 12 months from date of receipt.
Predicted Protein Size:	34 kDa
Gene Name:	collagen-like tail subunit (single strand of homotrimer) of asymmetric acetylcholinesterase
Database Link:	NP_005668 Entrez Gene 8292 Human Q9Y215
Background:	COLQ encodes the subunit of a collagen-like molecule associated with acetylcholinesterase in skeletal muscle. Each molecule is composed of three identical subunits. Each subunit contains a proline-rich attachment domain (PRAD) that binds an acetylcholinesterase tetramer to anchor the catalytic subunit of the enzyme to the basal lamina. Mutations in COLQ are associated with endplate acetylcholinesterase deficiency.
Synonyms:	EAD

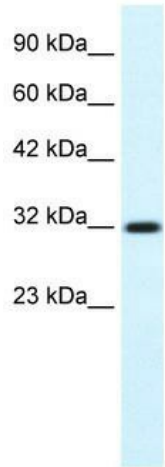


[View online »](#)

Note: Immunogen Sequence Homology: Human: 100%; Rat: 93%; Horse: 93%; Rabbit: 93%; Mouse: 92%; Bovine: 86%

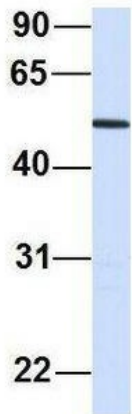
Protein Families: Druggable Genome, Transmembrane

Product images:



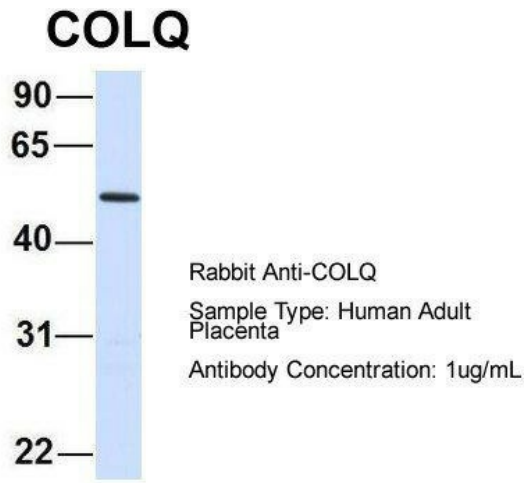
WB Suggested Anti-COLQ Antibody Titration: 0.2-1 ug/ml; ELISA Titer: 1:312500; Positive Control: HepG2 cell lysate

COLQ



Rabbit Anti-COLQ
 Sample Type: Human Adult Placenta
 Antibody Concentration: 1ug/mL

Host: Rabbit; Target Name: COLQ; Sample Tissue: Human Adult Placenta; Antibody Dilution: 1.0 ug/ml



Host: Rabbit; Target Name: COLQ; Sample Tissue: Human Adult Placenta; Antibody Dilution: 1.0 ug/ml