

Product datasheet for **TA335706**

Calicin (CCIN) Rabbit Polyclonal Antibody

Product data:

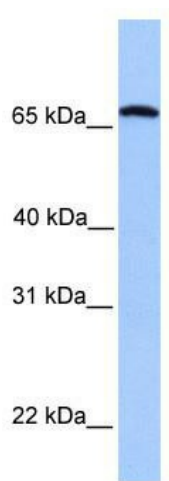
| | |
|-------------------------|--|
| Product Type: | Primary Antibodies |
| Applications: | WB |
| Recommended Dilution: | WB |
| Reactivity: | Human |
| Host: | Rabbit |
| Isotype: | IgG |
| Clonality: | Polyclonal |
| Immunogen: | The immunogen for Anti-CCIN Antibody: synthetic peptide directed towards the C terminal of human CCIN. Synthetic peptide located within the following region: TTSVPVLPNSCPLDVSHAICSIGDSKVFVCGGVTTASDVQTKDYTINPNA |
| Formulation: | Liquid. Purified antibody supplied in 1x PBS buffer with 0.09% (w/v) sodium azide and 2% sucrose. <i>Note that this product is shipped as lyophilized powder to China customers.</i> |
| Purification: | Affinity Purified |
| Conjugation: | Unconjugated |
| Storage: | Store at -20°C as received. |
| Stability: | Stable for 12 months from date of receipt. |
| Predicted Protein Size: | 65 kDa |
| Gene Name: | calicin |
| Database Link: | NP_005884 Entrez Gene 881 Human Q13939 |
| Background: | CCIN is a basic protein of the sperm head cytoskeleton. This protein contains kelch repeats and a BTB/POZ domain and is necessary for normal morphology during sperm differentiation. The protein encoded by this gene is a basic protein of the sperm head cytoskeleton. This protein contains kelch repeats and a BTB/POZ domain and is necessary for normal morphology during sperm differentiation. This gene is intronless. |
| Synonyms: | BTBD20; KBTBD14 |



[View online »](#)

Note: Immunogen Sequence Homology: Dog: 100%; Pig: 100%; Rat: 100%; Human: 100%; Mouse: 100%; Bovine: 100%; Rabbit: 100%; Horse: 93%; Guinea pig: 86%

Product images:



WB Suggested Anti-CCIN Antibody Titration: 0.2-1 ug/ml; Positive Control: Human Liver