

## Product datasheet for **TA335705**

### Calicin (CCIN) Rabbit Polyclonal Antibody

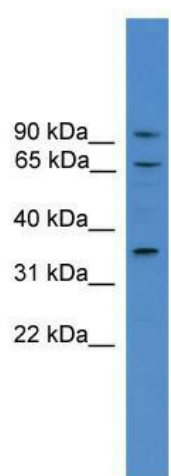
#### Product data:

Product Type:	Primary Antibodies
Applications:	WB
Recommended Dilution:	WB
Reactivity:	Human
Host:	Rabbit
Isotype:	IgG
Clonality:	Polyclonal
Immunogen:	The immunogen for Anti-CCIN Antibody: synthetic peptide directed towards the N terminal of human CCIN. Synthetic peptide located within the following region: VAYSIRDNFHYWASPEGSMHFMRCPPVIFGRLLRDENLHVLNEDQALSA
Formulation:	Liquid. Purified antibody supplied in 1x PBS buffer with 0.09% (w/v) sodium azide and 2% sucrose. <i>Note that this product is shipped as lyophilized powder to China customers.</i>
Purification:	Affinity Purified
Conjugation:	Unconjugated
Storage:	Store at -20°C as received.
Stability:	Stable for 12 months from date of receipt.
Predicted Protein Size:	65 kDa
Gene Name:	calicin
Database Link:	<a href="#">NP_005884</a> <a href="#">Entrez Gene 881 Human</a> <a href="#">Q13939</a>
Background:	CCIN is a basic protein of the sperm head cytoskeleton. This protein contains kelch repeats and a BTB/POZ domain and is necessary for normal morphology during sperm differentiation.
Synonyms:	BTBD20; KBTBD14
Note:	Immunogen Sequence Homology: Dog: 100%; Pig: 100%; Rat: 100%; Human: 100%; Mouse: 100%; Bovine: 100%; Rabbit: 100%; Guinea pig: 100%; Horse: 93%



[View online »](#)

## Product images:



WB Suggested Anti-CCIN Antibody Titration: 0.2-1 ug/ml; ELISA Titer: 1: 1562500; Positive Control: HT1080 cell lysate