

Product datasheet for **TA335698**

NFRKB Rabbit Polyclonal Antibody

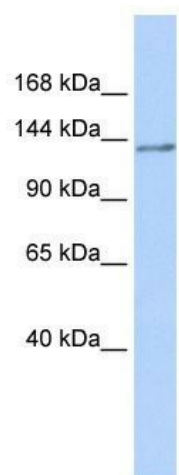
Product data:

Product Type:	Primary Antibodies
Applications:	WB
Recommended Dilution:	WB
Reactivity:	Human
Host:	Rabbit
Isotype:	IgG
Clonality:	Polyclonal
Immunogen:	The immunogen for Anti-NFRKB Antibody: synthetic peptide directed towards the N terminal of human NFRKB. Synthetic peptide located within the following region: SLAALYDLAVLKKKVKEKEEKKKKIKTIKSEAEDLAEPLSSTEGVAPLS
Formulation:	Liquid. Purified antibody supplied in 1x PBS buffer with 0.09% (w/v) sodium azide and 2% sucrose. <i>Note that this product is shipped as lyophilized powder to China customers.</i>
Purification:	Affinity Purified
Conjugation:	Unconjugated
Storage:	Store at -20°C as received.
Stability:	Stable for 12 months from date of receipt.
Predicted Protein Size:	142 kDa
Gene Name:	nuclear factor related to kappaB binding protein
Database Link:	NP_006156 Entrez Gene 4798 Human Q6P4R8
Background:	NFRKB binds to the DNA consensus sequence 5'-GGGGAATCTCC-3'.
Synonyms:	INO80G
Note:	Immunogen Sequence Homology: Dog: 100%; Rat: 100%; Horse: 100%; Human: 100%; Mouse: 100%; Rabbit: 100%; Bovine: 93%; Pig: 92%; Guinea pig: 86%
Protein Families:	Transcription Factors



[View online »](#)

Product images:



WB Suggested Anti-NFRKB Antibody Titration:
0.2-1 ug/ml; ELISA Titer: 1:312500; Positive
Control: Human brain