

## Product datasheet for **TA335697**

### **PAX1 Rabbit Polyclonal Antibody**

#### **Product data:**

Product Type:	Primary Antibodies
Applications:	WB
Recommended Dilution:	WB
Reactivity:	Human
Host:	Rabbit
Isotype:	IgG
Clonality:	Polyclonal
Immunogen:	The immunogen for Anti-PAX1 Antibody: synthetic peptide directed towards the middle region of human PAX1. Synthetic peptide located within the following region: AGVNRATFPATPAVNGLEKPALEADIKYTQSASTLSAVGGFLPACAYPAS
Formulation:	Liquid. Purified antibody supplied in 1x PBS buffer with 0.09% (w/v) sodium azide and 2% sucrose. <i>Note that this product is shipped as lyophilized powder to China customers.</i>
Purification:	Affinity Purified
Conjugation:	Unconjugated
Storage:	Store at -20°C as received.
Stability:	Stable for 12 months from date of receipt.
Predicted Protein Size:	46 kDa
Gene Name:	paired box 1
Database Link:	<a href="#">NP_006183</a> <a href="#">Entrez Gene 5075 Human</a> <a href="#">P15863</a>



[View online »](#)

**Background:**

The PAX genes, including PAX1, are a highly conserved family of developmental control genes that encode transcription factors and have been shown to play a role in pattern formation during embryogenesis in vertebrates. The PAX genes, including PAX1, are a highly conserved family of developmental control genes that encode transcription factors and have been shown to play a role in pattern formation during embryogenesis in vertebrates (McGaughan et al., 2003 [PubMed 12774041]). See PAX7 (MIM 167410) for a discussion of paired box domain genes. [supplied by OMIM]. Publication Note: This RefSeq record includes a subset of the publications that are available for this gene. Please see the Entrez Gene record to access additional publications.

**Synonyms:**

HUP48; OFC2

**Note:**

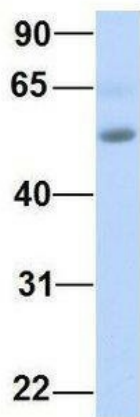
Immunogen Sequence Homology: Human: 100%; Pig: 93%; Rat: 93%; Horse: 93%; Mouse: 93%; Guinea pig: 93%; Dog: 86%; Rabbit: 86%; Bovine: 79%

**Product images:**



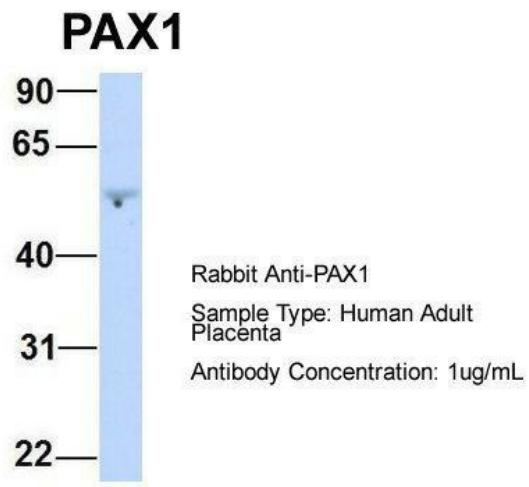
WB Suggested Anti-PAX1 Antibody Titration: 0.2-1 ug/ml; ELISA Titer: 1:12500; Positive Control: MCF7 cell lysate

**PAX1**



Rabbit Anti-PAX1  
 Sample Type: Human Fetal Muscle  
 Antibody Concentration: 1ug/mL

Host: Rabbit; Target Name: PAX1; Sample Tissue: Human Fetal Muscle; Antibody Dilution: 1.0 ug/ml



Host: Rabbit; Target Name: PAX1; Sample Tissue: Human Adult Placenta; Antibody Dilution: 1.0 ug/ml