

Product datasheet for **TA335695**

PCGF3 Rabbit Polyclonal Antibody

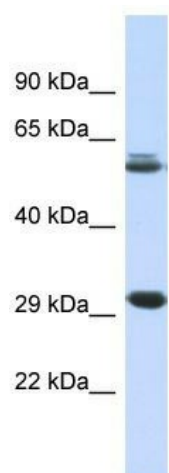
Product data:

Product Type:	Primary Antibodies
Applications:	WB
Recommended Dilution:	WB
Reactivity:	Human
Host:	Rabbit
Isotype:	IgG
Clonality:	Polyclonal
Immunogen:	The immunogen for Anti-PCGF3 Antibody: synthetic peptide directed towards the middle region of human PCGF3. Synthetic peptide located within the following region: FYHKLGMVPGDIKGETCSAKQHLDShrNGETKADDSSNKEAAEEKPEED
Formulation:	Liquid. Purified antibody supplied in 1x PBS buffer with 0.09% (w/v) sodium azide and 2% sucrose. <i>Note that this product is shipped as lyophilized powder to China customers.</i>
Purification:	Affinity Purified
Conjugation:	Unconjugated
Storage:	Store at -20°C as received.
Stability:	Stable for 12 months from date of receipt.
Predicted Protein Size:	28 kDa
Gene Name:	polycomb group ring finger 3
Database Link:	NP_006306 Entrez Gene 10336 Human Q3KNV8
Background:	PCGF3 encodes a protein that contains a C3HC4 type RING finger, which is a motif known to be involved in protein-protein interactions. The specific function of this protein has not yet been determined.
Synonyms:	DONG1; RNF3; RNF3A
Note:	Immunogen Sequence Homology: Pig: 100%; Horse: 100%; Human: 100%; Dog: 93%; Bovine: 93%; Rat: 86%; Mouse: 86%; Rabbit: 86%; Guinea pig: 86%

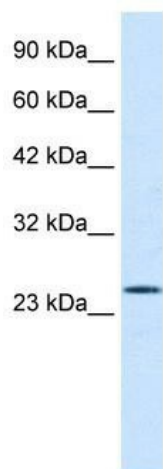


[View online »](#)

Product images:



Host: Rabbit; Target Name: PCGF3; Sample Tissue: Fetal Muscle lysates; Antibody Dilution: 1.0 ug/ml



WB Suggested Anti-PCGF3 Antibody Titration: 0.125 ug/ml; ELISA Titer: 1:12500; Positive Control: Raji cell lysate PCGF3 is strongly supported by BioGPS gene expression data to be expressed in Human Raji cells