

## Product datasheet for **TA335694**

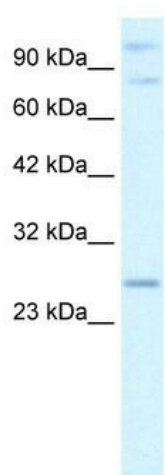
### PCGF3 Rabbit Polyclonal Antibody

#### Product data:

Product Type:	Primary Antibodies
Applications:	WB
Recommended Dilution:	WB
Reactivity:	Human
Host:	Rabbit
Isotype:	IgG
Clonality:	Polyclonal
Immunogen:	The immunogen for Anti-PCGF3 Antibody: synthetic peptide directed towards the middle region of human PCGF3. Synthetic peptide located within the following region: EVPGDIKGETCSAQHLDSHRNGETKADDSSNKEAAEEKPEEDNDYHRSD
Formulation:	Liquid. Purified antibody supplied in 1x PBS buffer with 0.09% (w/v) sodium azide and 2% sucrose. <i>Note that this product is shipped as lyophilized powder to China customers.</i>
Purification:	Protein A purified
Conjugation:	Unconjugated
Storage:	Store at -20°C as received.
Stability:	Stable for 12 months from date of receipt.
Predicted Protein Size:	28 kDa
Gene Name:	polycomb group ring finger 3
Database Link:	<a href="#">NP_006306</a> <a href="#">Entrez Gene 10336 Human</a> <a href="#">Q3KNV8</a>
Background:	PCGF3 contains a C3HC4 type RING finger, which is a motif known to be involved in protein-protein interactions. The specific function of this protein has not yet been determined.
Synonyms:	DONG1; RNF3; RNF3A
Note:	Immunogen Sequence Homology: Human: 100%; Dog: 93%; Pig: 86%; Rat: 86%; Mouse: 86%; Bovine: 86%; Rabbit: 85%; Horse: 79%; Guinea pig: 79%; Yeast: 75%



[View online »](#)

**Product images:**

WB Suggested Anti-PCGF3 Antibody Titration: 2.5 ug/ml; ELISA Titer: 1:62500; Positive Control: Human brain