

Product datasheet for **TA335693**

ARIH2 Rabbit Polyclonal Antibody

Product data:

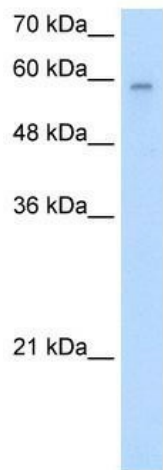
Product Type:	Primary Antibodies
Applications:	IHC, WB
Recommended Dilution:	WB, IHC
Reactivity:	Human
Host:	Rabbit
Isotype:	IgG
Clonality:	Polyclonal
Immunogen:	The immunogen for Anti-ARIH2 Antibody: synthetic peptide directed towards the N terminal of human ARIH2. Synthetic peptide located within the following region: EDYDPNCEEEEEEDDPGDIEDYYVGVASDVEQQGADAFDPEEYQFTCL
Formulation:	Liquid. Purified antibody supplied in 1x PBS buffer with 0.09% (w/v) sodium azide and 2% sucrose. <i>Note that this product is shipped as lyophilized powder to China customers.</i>
Purification:	Protein A purified
Conjugation:	Unconjugated
Storage:	Store at -20°C as received.
Stability:	Stable for 12 months from date of receipt.
Predicted Protein Size:	58 kDa
Gene Name:	ariadne RBR E3 ubiquitin protein ligase 2
Database Link:	NP_006312 Entrez Gene 10425 Human O95376
Background:	ARIH2 might act as an E3 ubiquitin-protein ligase, or as part of E3 complex, which accepts ubiquitin from specific E2 ubiquitin-conjugating enzymes, such as UBE2L3/UBCM4, and then transfers it to substrates.
Synonyms:	ARI2; TRIAD1
Note:	Immunogen Sequence Homology: Dog: 100%; Pig: 100%; Rat: 100%; Horse: 100%; Human: 100%; Mouse: 100%; Rabbit: 100%; Guinea pig: 100%; Bovine: 93%



[View online »](#)

Protein Families: Druggable Genome

Product images:



WB Suggested Anti-ARIH2 Antibody Titration: 2.5 ug/ml; Positive Control: Jurkat cell lysate
There is BioGPS gene expression data showing that ARIH2 is expressed in Jurkat



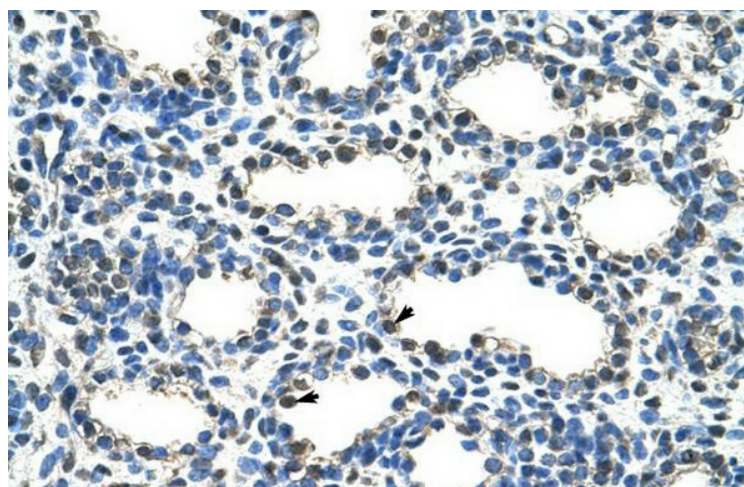
Anti-ARIH2 Western Blot & Peptide Block Validation

Lysate: Jurkat Cell

Lane A: Primary Antibody
Lane B: Primary Antibody + Blocking Peptide

Primary Antibody Concentration: 1.25µg/ml
Peptide Concentration: 1.0µg/ml
Lysate Quantity: 25µg/lane
Gel Concentration: 12%

Host: Rabbit; Target Name: ARIH2; Sample Tissue: Jurkat; Lane A: Primary Antibody; Lane B: Primary Antibody + Blocking Peptide ; Primary Antibody Concentration:1.25ug/mL; Peptide Concentration: 1.0ug/mL; Lysate Quantity: 25ug/lane; Gel Concentration: 12%
There is BioGPS gene expression data showing that ARIH2 is expressed in Jurkat



Human Lung