

Product datasheet for **TA335690**

TM9SF1 Rabbit Polyclonal Antibody

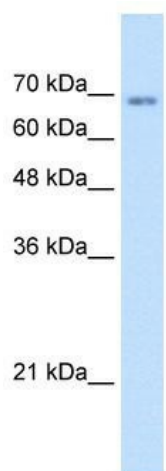
Product data:

Product Type:	Primary Antibodies
Applications:	IHC, WB
Recommended Dilution:	WB, IHC
Reactivity:	Human
Host:	Rabbit
Isotype:	IgG
Clonality:	Polyclonal
Immunogen:	The immunogen for Anti-TM9SF1 Antibody: synthetic peptide directed towards the N terminal of human TM9SF1. Synthetic peptide located within the following region: EGVTHYKAGDPVILYVNVKVGYPYHNPQETYHYQLPVCCPEKIRHKLSLGLG
Formulation:	Liquid. Purified antibody supplied in 1x PBS buffer with 0.09% (w/v) sodium azide and 2% sucrose.
Purification:	Protein A purified
Conjugation:	Unconjugated
Storage:	Store at -20°C as received.
Stability:	Stable for 12 months from date of receipt.
Predicted Protein Size:	67 kDa
Gene Name:	transmembrane 9 superfamily member 1
Database Link:	NP_006396 Entrez Gene 10548 Human O15321
Background:	TM9SF1 may function as channel, small molecule transporter or receptor.
Synonyms:	HMP70; MP70
Note:	Immunogen Sequence Homology: Dog: 100%; Pig: 100%; Rat: 100%; Horse: 100%; Human: 100%; Mouse: 100%; Bovine: 100%; Rabbit: 100%; Zebrafish: 100%; Guinea pig: 100%; Goat: 92%
Protein Families:	Transmembrane

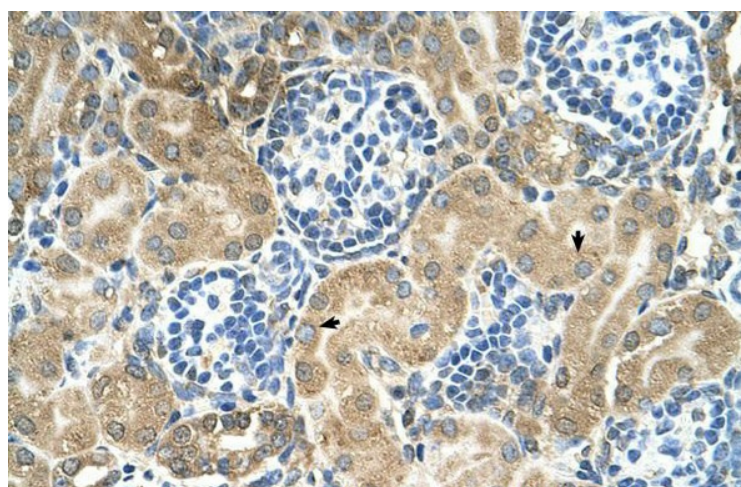


[View online »](#)

Product images:



WB Suggested Anti-TM9SF1 Antibody Titration:
1.25 ug/ml; Positive Control: Jurkat cell lysate



Human kidney