

## Product datasheet for **TA335688**

### TCP1 delta (CCT4) Rabbit Polyclonal Antibody

#### Product data:

Product Type:	Primary Antibodies
Applications:	IHC, WB
Recommended Dilution:	IHC, WB
Reactivity:	Human, Rat
Host:	Rabbit
Isotype:	IgG
Clonality:	Polyclonal
Immunogen:	The immunogen for Anti-CCT4 Antibody: synthetic peptide directed towards the C terminal of human CCT4. Synthetic peptide located within the following region: AFADAMEVIPSTLAENAGLNPISTVTELRNRHAQGEKTAGINVRKGGISN
Formulation:	Liquid. Purified antibody supplied in 1x PBS buffer with 0.09% (w/v) sodium azide and 2% sucrose. <i>Note that this product is shipped as lyophilized powder to China customers.</i>
Purification:	Affinity Purified
Conjugation:	Unconjugated
Storage:	Store at -20°C as received.
Stability:	Stable for 12 months from date of receipt.
Predicted Protein Size:	58 kDa
Gene Name:	chaperonin containing TCP1 subunit 4
Database Link:	<a href="#">NP_006421</a> <a href="#">Entrez Gene 29374 Rat</a> <a href="#">Entrez Gene 10575 Human</a> <a href="#">P50991</a>
Background:	The CCT (chaperonin containing TCP-1) complex functions as a molecular chaperone in the eukaryotic cytosol. CCT4 interacts with human cyclin E which has been implicated in positive control of the G1/S phase transition.
Synonyms:	CCT-DELTA; Cctd; SRB

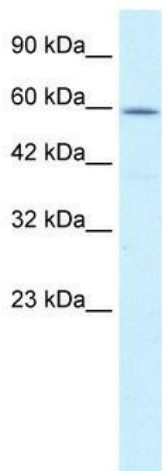


[View online »](#)

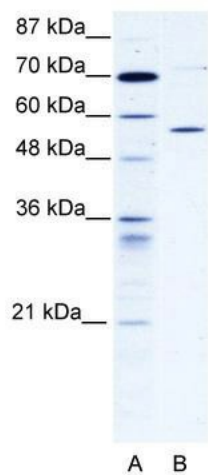
**Note:** Immunogen Sequence Homology: Rat: 100%; Human: 100%; Yeast: 100%; Dog: 93%; Pig: 93%; Horse: 93%; Mouse: 93%; Bovine: 93%; Rabbit: 93%; Zebrafish: 93%; Guinea pig: 93%; Goat: 79%

**Protein Families:** Druggable Genome

**Product images:**

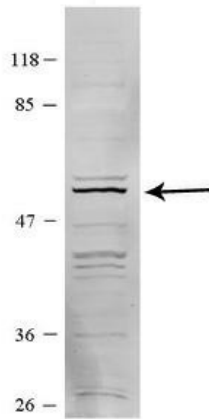


WB Suggested Anti-CCT4 Antibody Titration: 0.2-1 ug/ml; ELISA Titer: 1:312500; Positive Control: HepG2 cell lysate; CCT4 is supported by BioGPS gene expression data to be expressed in HepG2

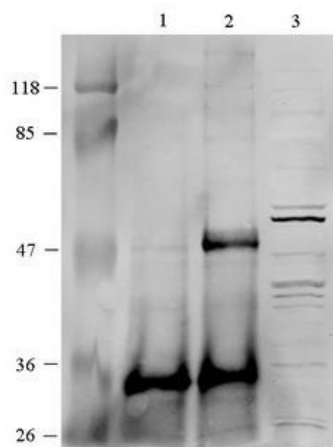


CCT4 antibody - C-terminal region validated by WB using 293T cells lysate; CCT4 is supported by BioGPS gene expression data to be expressed in HEK293T

**CCT4**



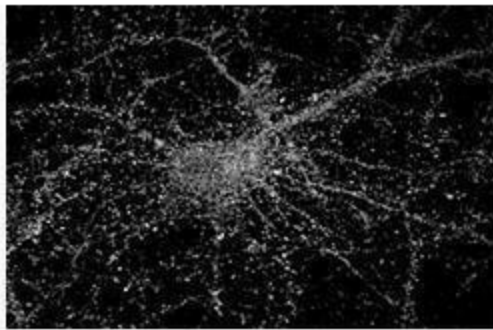
CCT4 antibody - C-terminal region validated by WB using HEK 293T cells at 1:1,000 dilution for antibody samples and 1:10,000 for secondary antibodies. CCT4 is supported by BioGPS gene expression data to be expressed in HEK293T



CCT4 (C-term) blot

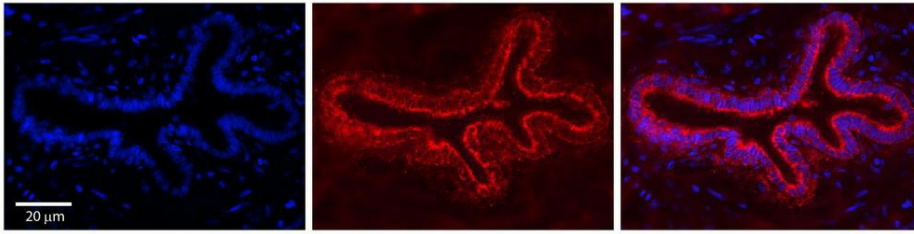
Sample: HEK 293 cells; Dilution: 1 to 1000. CCT4 is supported by BioGPS gene expression data to be expressed in HEK293

**CCT4**



White: CCT4

Sample Type. Rat Hippocampal Neurons - 14DIV Primary Antibody Dilution. 1:200 Secondary Antibody. Anti-rabbit-Cy3 Secondary Antibody Dilution. 1:500 Color/Signal Descriptions. White: CCT4 Gene Name. CCT4 Submitted by. Dan Fowler - University of Oregon, Institute of Neuroscience



Rabbit Anti-CCT4 Antibody; Formalin Fixed Paraffin Embedded Tissue: Human Bronchial Epithelial Tissue; Observed Staining: Cytoplasmic; Primary Antibody Concentration: 1:100; Secondary Antibody: Donkey anti-Rabbit-Cy3; Secondary Antibody Concentration: 1:200; Magnification: 20X; Exposure Time: 0.5–2.0 sec;