

Product datasheet for **TA335687**

ST6GALNAC2 Rabbit Polyclonal Antibody

Product data:

Product Type:	Primary Antibodies
Applications:	WB
Recommended Dilution:	WB
Reactivity:	Human
Host:	Rabbit
Isotype:	IgG
Clonality:	Polyclonal
Immunogen:	The immunogen for Anti-ST6GALNAC2 Antibody: synthetic peptide directed towards the middle region of human ST6GALNAC2. Synthetic peptide located within the following region: VNTMKNSLVSYWNLGFTSVPQGQDLQYIFIPSDIRDYVMLRSAILGVPVP
Formulation:	Liquid. Purified antibody supplied in 1x PBS buffer with 0.09% (w/v) sodium azide and 2% sucrose.
Purification:	Affinity Purified
Conjugation:	Unconjugated
Storage:	Store at -20°C as received.
Stability:	Stable for 12 months from date of receipt.
Predicted Protein Size:	42 kDa
Gene Name:	ST6 N-acetylgalactosaminide alpha-2,6-sialyltransferase 2
Database Link:	NP_006447 Entrez Gene 10610 Human Q9UJ37



[View online »](#)

Background:

ST6GALNAC2 belongs to a family of sialyltransferases that add sialic acids to the nonreducing ends of glycoconjugates. At the cell surface, these modifications have roles in cell-cell and cell-substrate interactions, bacterial adhesion, and protein targeting. ST6GALNAC2 belongs to a family of sialyltransferases that add sialic acids to the nonreducing ends of glycoconjugates. At the cell surface, these modifications have roles in cell-cell and cell-substrate interactions, bacterial adhesion, and protein targeting (Samyn-Petit et al., 2000 [PubMed 10742600]). [supplied by OMIM]. PRIMARYREFSEQ_SPAN PRIMARY_IDENTIFIER PRIMARY_SPAN COMP 1-255 AC015802.21 33337-33591 256-1378 BT019972.1 1-1123 1379-2105 AC015802.21 53295-54021

Synonyms:

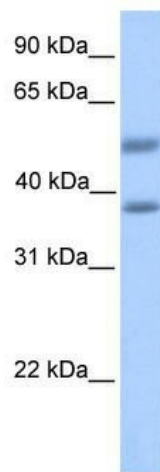
SAITL1; SIAT7; SIAT7B; SIATL1; ST6GalNAII; STHM

Note:

Immunogen Sequence Homology: Pig: 100%; Rat: 100%; Horse: 100%; Human: 100%; Rabbit: 100%; Mouse: 92%; Bovine: 91%; Dog: 85%

Protein Families:

Transmembrane

Product images:

WB Suggested Anti-ST6GALNAC2 Antibody
Titration: 0.2-1 ug/ml; Positive Control: Human
heart