

Product datasheet for **TA335686**

HEXIM1 Rabbit Polyclonal Antibody

Product data:

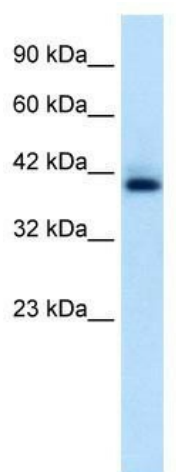
Product Type:	Primary Antibodies
Applications:	WB
Recommended Dilution:	WB
Reactivity:	Human
Host:	Rabbit
Isotype:	IgG
Clonality:	Polyclonal
Immunogen:	The immunogen for Anti-HEXIM1 Antibody: synthetic peptide directed towards the C terminal of human HEXIM1. Synthetic peptide located within the following region: LESKRLGGDDARVRELELELDRLRAENLQLLTENELHRQQRAPLSKFGD
Formulation:	Liquid. Purified antibody supplied in 1x PBS buffer with 0.09% (w/v) sodium azide and 2% sucrose. <i>Note that this product is shipped as lyophilized powder to China customers.</i>
Purification:	Protein A purified
Conjugation:	Unconjugated
Storage:	Store at -20°C as received.
Stability:	Stable for 12 months from date of receipt.
Predicted Protein Size:	41 kDa
Gene Name:	hexamethylene bis-acetamide inducible 1
Database Link:	NP_006451 Entrez Gene 10614 Human O94992
Background:	HEXIM1 expression is induced by hexamethylene-bis-acetamide in vascular smooth muscle cells. The function of this protein is not yet known.
Synonyms:	CLP1; EDG1; HIS1; MAQ1
Note:	Immunogen Sequence Homology: Dog: 100%; Pig: 100%; Rat: 100%; Horse: 100%; Human: 100%; Mouse: 100%; Bovine: 100%; Rabbit: 93%; Yeast: 82%; Zebrafish: 80%



[View online »](#)

Protein Families: Transcription Factors

Product images:



WB Suggested Anti-HEXIM1 Antibody Titration:
0.6 ug/ml; ELISA Titer: 1:12500; Positive Control:
Jurkat cell lysate