

## Product datasheet for **TA335681**

### Galectin 8 (LGALS8) Rabbit Polyclonal Antibody

#### Product data:

Product Type:	Primary Antibodies
Applications:	WB
Recommended Dilution:	WB
Reactivity:	Human
Host:	Rabbit
Isotype:	IgG
Clonality:	Polyclonal
Immunogen:	The immunogen for Anti-LGALS8 Antibody: synthetic peptide directed towards the C terminal of human LGALS8. Synthetic peptide located within the following region: FPFSPGMYFEMIIYCDVREFKVAVNGVHSLEYKHRFKELSSIDTLEINGD
Formulation:	Liquid. Purified antibody supplied in 1x PBS buffer with 0.09% (w/v) sodium azide and 2% sucrose. <i>Note that this product is shipped as lyophilized powder to China customers.</i>
Purification:	Affinity Purified
Conjugation:	Unconjugated
Storage:	Store at -20°C as received.
Stability:	Stable for 12 months from date of receipt.
Predicted Protein Size:	39 kDa
Gene Name:	galectin 8
Database Link:	<a href="#">NP_006490</a> <a href="#">Entrez Gene 3964 Human</a> <a href="#">O00214</a>



[View online »](#)

**Background:**

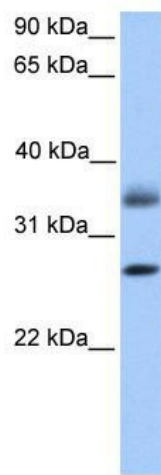
LGALS8 is a member of the galectin family. Galectins are beta-galactoside-binding animal lectins with conserved carbohydrate recognition domains. The galectins have been implicated in many essential functions including development, differentiation, cell-cell adhesion, cell-matrix interaction, growth regulation, apoptosis, and RNA splicing. This gene is widely expressed in tumoral tissues and seems to be involved in integrin-like cell interactions. This gene encodes a member of the galectin family. Galectins are beta-galactoside-binding animal lectins with conserved carbohydrate recognition domains. The galectins have been implicated in many essential functions including development, differentiation, cell-cell adhesion, cell-matrix interaction, growth regulation, apoptosis, and RNA splicing. This gene is widely expressed in tumoral tissues and seems to be involved in integrin-like cell interactions. Alternatively spliced transcript variants encoding different isoforms have been identified.

**Synonyms:**

Gal-8; PCTA-1; PCTA1; Po66-CBP

**Note:**

Immunogen Sequence Homology: Dog: 100%; Horse: 100%; Human: 100%; Bovine: 100%; Rabbit: 100%; Pig: 93%; Rat: 93%; Mouse: 93%; Zebrafish: 91%; Guinea pig: 79%

**Product images:**

WB Suggested Anti-LGALS8 Antibody Titration:  
0.2-1 ug/ml; Positive Control: HeLa cell lysate