

Product datasheet for **TA335680**

TTC10 (IFT88) Rabbit Polyclonal Antibody

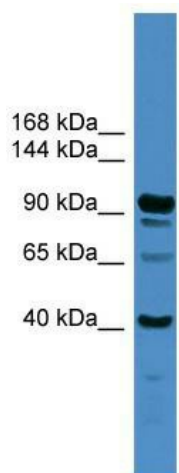
Product data:

Product Type:	Primary Antibodies
Applications:	IHC, WB
Recommended Dilution:	WB, IHC
Reactivity:	Human
Host:	Rabbit
Isotype:	IgG
Clonality:	Polyclonal
Immunogen:	The immunogen for Anti-IFT88 Antibody: synthetic peptide directed towards the middle region of human IFT88. Synthetic peptide located within the following region: EIREQRIKSGRDGSGGSRGKREGSASGDSGQNYSSASSKGERLSARLRALP
Formulation:	Liquid. Purified antibody supplied in 1x PBS buffer with 0.09% (w/v) sodium azide and 2% sucrose. <i>Note that this product is shipped as lyophilized powder to China customers.</i>
Purification:	Affinity Purified
Conjugation:	Unconjugated
Storage:	Store at -20°C as received.
Stability:	Stable for 12 months from date of receipt.
Predicted Protein Size:	91 kDa
Gene Name:	intraflagellar transport 88
Database Link:	NP_006522 Entrez Gene 8100 Human Q13099
Background:	This gene encodes a member of the tetratricopeptide repeat (TPR) family. Mutations of a similar gene in mouse can cause polycystic kidney disease. Two transcript variants encoding distinct isoforms have been identified for this gene.
Synonyms:	D13S1056E; DAF19; hTg737; TG737; TTC10
Note:	Immunogen Sequence Homology: Human: 100%; Dog: 92%; Rat: 86%; Rabbit: 86%; Pig: 85%; Horse: 85%; Mouse: 85%; Guinea pig: 85%

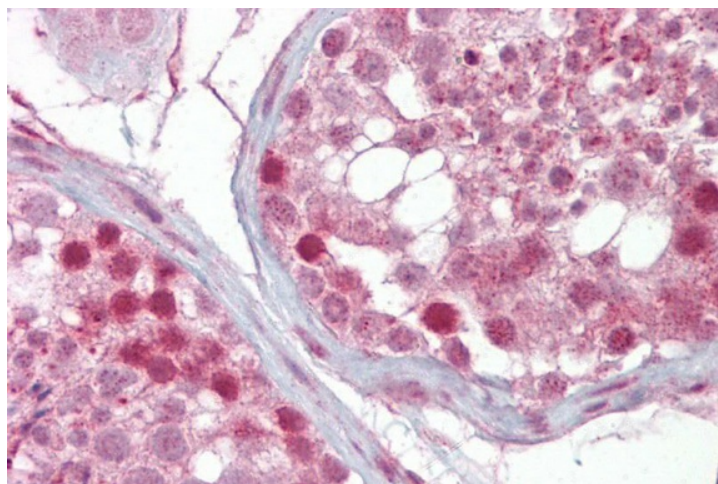


[View online »](#)

Product images:



WB Suggested Anti-IFT88 Antibody Titration: 0.2-1 ug/ml; ELISA Titer: 1: 1562500; Positive Control: Jurkat cell lysate IFT88 is supported by BioGPS gene expression data to be expressed in Jurkat



Testis