

Product datasheet for **TA335679**

CCT6B Rabbit Polyclonal Antibody

Product data:

Product Type:	Primary Antibodies
Applications:	WB
Recommended Dilution:	WB
Reactivity:	Human
Host:	Rabbit
Isotype:	IgG
Clonality:	Polyclonal
Immunogen:	The immunogen for Anti-CCT6B Antibody: synthetic peptide directed towards the N terminal of human CCT6B. Synthetic peptide located within the following region: VARTSLQTKVHAELADVLTENVVDSVLAVRRPGYPIDLFMVEIMEMKHKL
Formulation:	Liquid. Purified antibody supplied in 1x PBS buffer with 0.09% (w/v) sodium azide and 2% sucrose. <i>Note that this product is shipped as lyophilized powder to China customers.</i>
Purification:	Affinity Purified
Conjugation:	Unconjugated
Storage:	Store at -20°C as received.
Stability:	Stable for 12 months from date of receipt.
Predicted Protein Size:	58 kDa
Gene Name:	chaperonin containing TCP1 subunit 6B
Database Link:	NP_006575 Entrez Gene 10693 Human Q92526



[View online »](#)

Background:

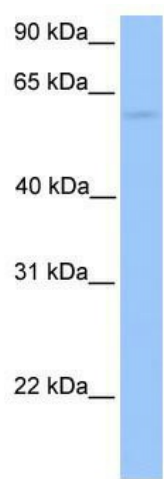
CCT6B is a molecular chaperone that is a member of the chaperonin containing TCP1 complex (CCT), also known as the TCP1 ring complex (TRiC). This complex consists of two identical stacked rings, each containing eight different proteins. Unfolded polypeptides enter the central cavity of the complex and are folded in an ATP-dependent manner. The complex folds various proteins, including actin and tubulin. This gene encodes a molecular chaperone that is a member of the chaperonin containing TCP1 complex (CCT), also known as the TCP1 ring complex (TRiC). This complex consists of two identical stacked rings, each containing eight different proteins. Unfolded polypeptides enter the central cavity of the complex and are folded in an ATP-dependent manner. The complex folds various proteins, including actin and tubulin. Alternate transcriptional splice variants of this gene have been observed but have not been thoroughly characterized.

Synonyms:

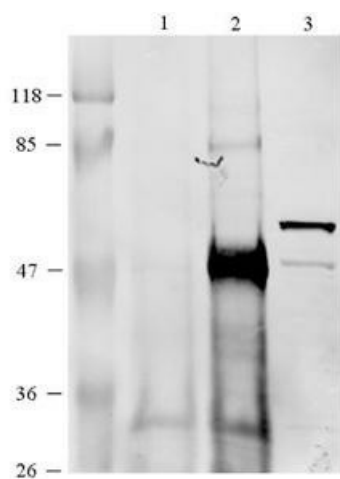
CCT-zeta-2; CCTZ-2; Cctz2; TCP-1-zeta-2; TSA303

Note:

Immunogen Sequence Homology: Pig: 100%; Human: 100%; Guinea pig: 100%; Dog: 93%; Bovine: 93%; Rabbit: 93%; Rat: 86%; Horse: 86%; Mouse: 86%

Product images:

WB Suggested Anti-CCT6B Antibody Titration: 0.2-1 ug/ml; Positive Control: 721_B cell lysate



WB Suggested Anti-CCT4 Antibody Titration: 1 ug/mL
Lane 1: 10ug of HEK293. CCT6B is supported by BioGPS gene expression data to be expressed in HEK293T