

## Product datasheet for TA335675

### TRIM10 Rabbit Polyclonal Antibody

#### Product data:

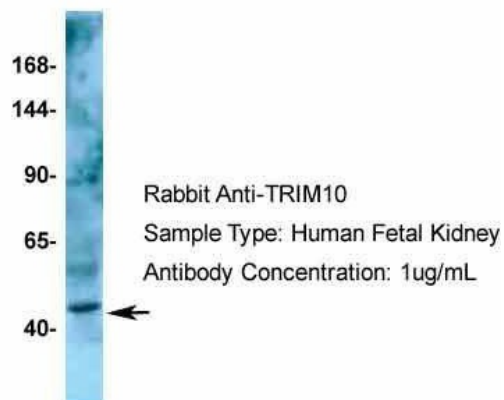
Product Type:	Primary Antibodies
Applications:	WB
Recommended Dilution:	WB
Reactivity:	Human
Host:	Rabbit
Isotype:	IgG
Clonality:	Polyclonal
Immunogen:	The immunogen for Anti-TRIM10 Antibody: synthetic peptide directed towards the C terminal of human TRIM10. Synthetic peptide located within the following region: RVSLDYEVGWVTFTNAVTREPIYFTASFTRKVIPFFGLWGRGSSFSLS
Formulation:	Liquid. Purified antibody supplied in 1x PBS buffer with 0.09% (w/v) sodium azide and 2% sucrose.
Purification:	Protein A purified
Conjugation:	Unconjugated
Storage:	Store at -20°C as received.
Stability:	Stable for 12 months from date of receipt.
Predicted Protein Size:	55 kDa
Gene Name:	tripartite motif containing 10
Database Link:	<a href="#">NP_006769</a> <a href="#">Entrez Gene 10107 Human</a> <a href="#">Q9UDY6</a>
Background:	TRIM10 is a member of the tripartite motif (TRIM) family. The TRIM motif includes three zinc-binding domains, a RING, a B-box type 1 and a B-box type 2, and a coiled-coil region. This protein localizes to cytoplasmic bodies. Studies in mice suggest that this protein plays a role in terminal differentiation of erythroid cells.
Synonyms:	HERF1; RFB30; RNF9
Note:	Immunogen Sequence Homology: Human: 100%; Pig: 93%; Bovine: 93%; Rabbit: 90%; Horse: 86%; Mouse: 86%; Guinea pig: 86%; Dog: 79%


[View online »](#)

Protein Families: Druggable Genome

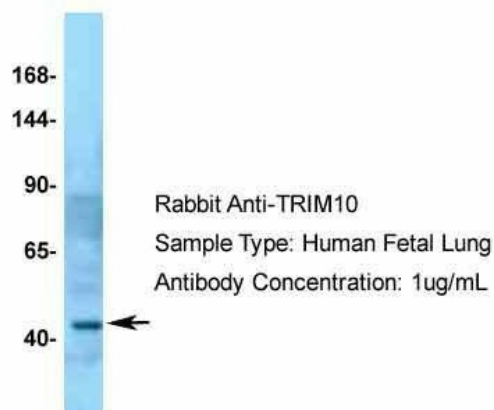
## Product images:

### TRIM10



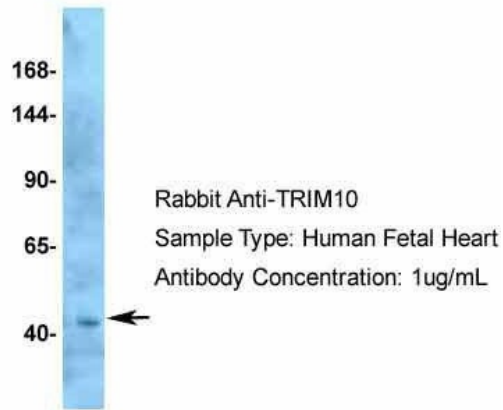
Host: Rabbit; Target Name: TRIM10; Sample  
Tissue: Human Fetal Kidney; Antibody Dilution:  
1.0 ug/ml

### TRIM10



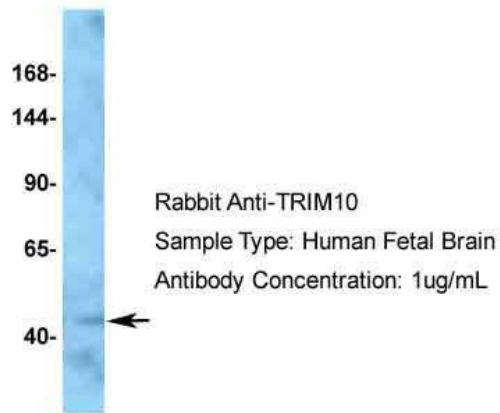
Host: Rabbit; Target Name: TRIM10; Sample  
Tissue: Human Fetal Lung; Antibody Dilution: 1.0  
ug/ml

## TRIM10



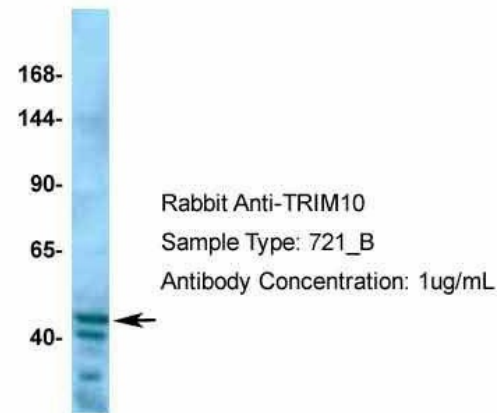
Host: Rabbit; Target Name: TRIM10; Sample  
Tissue: Human Fetal Heart; Antibody Dilution: 1.0  
ug/ml

## TRIM10



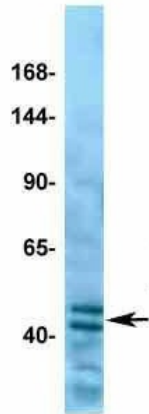
Host: Rabbit; Target Name: TRIM10; Sample  
Tissue: Human Fetal Brain; Antibody Dilution: 1.0  
ug/ml

## TRIM10



Host: Rabbit; Target Name: TRIM10; Sample  
Tissue: HeLa; Antibody Dilution: 1.0 ug/ml

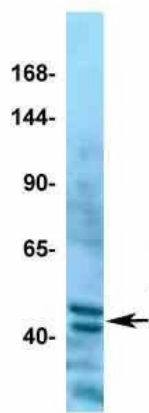
## TRIM10



Rabbit Anti-TRIM10  
Sample Type: MCF7  
Antibody Concentration: 1ug/mL

Host: Rabbit; Target Name: TRIM10; Sample  
Tissue: MCF7; Antibody Dilution: 1.0 ug/ml

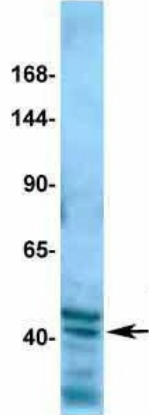
## TRIM10



Rabbit Anti-TRIM10  
Sample Type: Jurkat  
Antibody Concentration: 1ug/mL

Host: Rabbit; Target Name: TRIM10; Sample  
Tissue: Jurkat; Antibody Dilution: 1.0 ug/ml

## TRIM10



Rabbit Anti-TRIM10  
Sample Type: 721\_B  
Antibody Concentration: 1ug/mL

Host: Rabbit; Target Name: TRIM10; Sample  
Tissue: 721\_B; Antibody Dilution: 1.0 ug/ml; There  
is BioGPS gene expression data showing that  
TRIM10 is expressed in 721\_B



WB Suggested Anti-TRIM10 Antibody Titration: 5.0 ug/ml; ELISA Titer: 1:2500; Positive Control: HepG2 cell lysate. There is BioGPS gene expression data showing that TRIM10 is expressed in HepG2.