

Product datasheet for **TA335674**

ZFPL1 Rabbit Polyclonal Antibody

Product data:

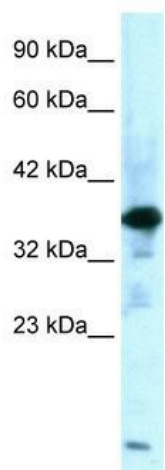
Product Type:	Primary Antibodies
Applications:	IHC, WB
Recommended Dilution:	WB, IHC
Reactivity:	Human
Host:	Rabbit
Isotype:	IgG
Clonality:	Polyclonal
Immunogen:	The immunogen for Anti-ZFPL1 Antibody: synthetic peptide directed towards the middle region of human ZFPL1. Synthetic peptide located within the following region: NGPIFPPTNLAGPVASALREKLATVNWARAGLGLPLIDEVVSPEPEPLNT
Formulation:	Liquid. Purified antibody supplied in 1x PBS buffer with 0.09% (w/v) sodium azide and 2% sucrose. <i>Note that this product is shipped as lyophilized powder to China customers.</i>
Purification:	Affinity Purified
Conjugation:	Unconjugated
Storage:	Store at -20°C as received.
Stability:	Stable for 12 months from date of receipt.
Predicted Protein Size:	34 kDa
Gene Name:	zinc finger protein like 1
Database Link:	NP_006773 Entrez Gene 7542 Human O95159
Background:	ZFPL1 is expressed strongly in the exocrine pancreas as a 1.4-kb polyadenylated RNA encoding a putative protein of 310 amino acids.
Synonyms:	D11S750; MCG4
Note:	Immunogen Sequence Homology: Pig: 100%; Rat: 100%; Goat: 100%; Human: 100%; Mouse: 100%; Bovine: 100%; Rabbit: 100%; Guinea pig: 100%; Dog: 92%; Horse: 92%



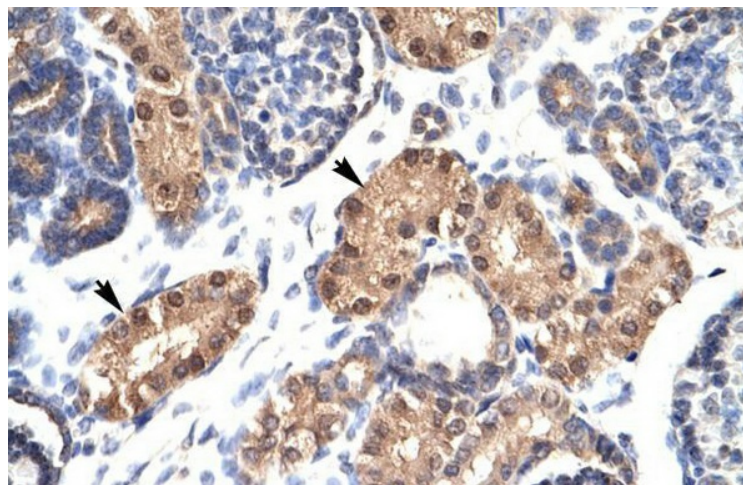
[View online »](#)

Protein Families: Transcription Factors, Transmembrane

Product images:



WB Suggested Anti-ZFPL1 Antibody Titration: 0.2-1 ug/ml; Positive Control: Human Muscle



Human kidney