

Product datasheet for **TA335673**

CBX1 Rabbit Polyclonal Antibody

Product data:

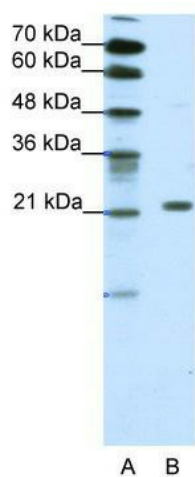
| | |
|-------------------------|--|
| Product Type: | Primary Antibodies |
| Applications: | WB |
| Recommended Dilution: | WB |
| Reactivity: | Human |
| Host: | Rabbit |
| Isotype: | IgG |
| Clonality: | Polyclonal |
| Immunogen: | The immunogen for Anti-CBX1 Antibody: synthetic peptide directed towards the middle region of human CBX1. Synthetic peptide located within the following region: PDLIAEFLQSQKTAHETDKSEGGKRRKADSDSEDKGEESKPKKKKEESEKP |
| Formulation: | Liquid. Purified antibody supplied in 1x PBS buffer with 0.09% (w/v) sodium azide and 2% sucrose. <i>Note that this product is shipped as lyophilized powder to China customers.</i> |
| Purification: | Protein A purified |
| Conjugation: | Unconjugated |
| Storage: | Store at -20°C as received. |
| Stability: | Stable for 12 months from date of receipt. |
| Predicted Protein Size: | 21 kDa |
| Gene Name: | chromobox 1 |
| Database Link: | NP_006798 Entrez Gene 10951 Human P83916 |
| Background: | CBX1 is the component of heterochromatin. CBX1 recognizes and binds histone H3 tails methylated at 'Lys-9', leading to epigenetic repression. CBX1 interaction with lamin B receptor (LBR) can contribute to the association of the heterochromatin with the inner nuclear membrane. Heterochromatin protein-1 (HP1) is localized at heterochromatin sites, where it mediates gene silencing. [supplied by OMIM] |
| Synonyms: | CBX; HP1-BETA; HP1Hs-beta; HP1Hsbeta; M31; MOD1; p25beta |



[View online »](#)

Note: Immunogen Sequence Homology: Dog: 100%; Pig: 100%; Rat: 100%; Horse: 100%; Human: 100%; Mouse: 100%; Bovine: 100%; Rabbit: 100%; Guinea pig: 93%

Product images:



WB Suggested Anti-CBX1 Antibody Titration: 1.25 ug/ml; ELISA Titer: 1:62500; Positive Control: HepG2 cell lysate