

Product datasheet for TA335672

CBX1 Rabbit Polyclonal Antibody

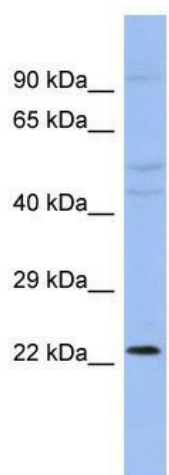
Product data:

Product Type:	Primary Antibodies
Applications:	WB
Recommended Dilution:	WB
Reactivity:	Human
Host:	Rabbit
Isotype:	IgG
Clonality:	Polyclonal
Immunogen:	The immunogen for Anti-CBX1 Antibody: synthetic peptide directed towards the N terminal of human CBX1. Synthetic peptide located within the following region: MGKKQNKKKVEEVLEEEEEYVVEKVLDRRVVKGKVEYLLKWKGFSDEDN
Formulation:	Liquid. Purified antibody supplied in 1x PBS buffer with 0.09% (w/v) sodium azide and 2% sucrose. <i>Note that this product is shipped as lyophilized powder to China customers.</i>
Purification:	Affinity Purified
Conjugation:	Unconjugated
Storage:	Store at -20°C as received.
Stability:	Stable for 12 months from date of receipt.
Predicted Protein Size:	21 kDa
Gene Name:	chromobox 1
Database Link:	NP_006798 Entrez Gene 10951 Human P83916
Background:	CBX1 is the component of heterochromatin. CBX1 recognizes and binds histone H3 tails methylated at 'Lys-9', leading to epigenetic repression. CBX1 interaction with lamin B receptor (LBR) can contribute to the association of the heterochromatin with the in
Synonyms:	CBX; HP1-BETA; HP1Hs-beta; HP1Hsbeta; M31; MOD1; p25beta
Note:	Immunogen Sequence Homology: Dog: 100%; Pig: 100%; Rat: 100%; Horse: 100%; Human: 100%; Mouse: 100%; Yeast: 100%; Bovine: 100%; Rabbit: 100%; Zebrafish: 93%



[View online »](#)

Product images:



WB Suggested Anti-CBX1 Antibody Titration: 0.2-1 ug/ml; ELISA Titer: 1:62500; Positive Control: OVCAR-3 cell lysate CBX1 is supported by BioGPS gene expression data to be expressed in OVCAR3