

Product datasheet for **TA335671**

OS9 Rabbit Polyclonal Antibody

Product data:

Product Type:	Primary Antibodies
Applications:	WB
Recommended Dilution:	WB
Reactivity:	Human
Host:	Rabbit
Isotype:	IgG
Clonality:	Polyclonal
Immunogen:	The immunogen for Anti-OS9 Antibody is: synthetic peptide directed towards the C-terminal region of Human OS9. Synthetic peptide located within the following region: LKEIFFNILVPGAEAAQKERQRQKELESNYRRVWGSPGGEGTGDLDEFDF
Formulation:	Liquid. Purified antibody supplied in 1x PBS buffer with 0.09% (w/v) sodium azide and 2% sucrose. <i>Note that this product is shipped as lyophilized powder to China customers.</i>
Purification:	Affinity Purified
Conjugation:	Unconjugated
Storage:	Store at -20°C as received.
Stability:	Stable for 12 months from date of receipt.
Predicted Protein Size:	73 kDa
Gene Name:	OS9, endoplasmic reticulum lectin
Database Link:	NP_006803 Entrez Gene 10956 Human Q13438
Background:	This gene encodes a protein that is highly expressed in osteosarcomas. This protein binds to the hypoxia-inducible factor 1 (HIF-1), a key regulator of the hypoxic response and angiogenesis, and promotes the degradation of one of its subunits. Alternate transcriptional splice variants, encoding different isoforms, have been characterized.
Synonyms:	ERLEC2; OS-9

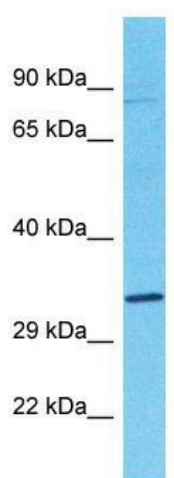


[View online »](#)

Note: Immunogen Sequence Homology: Horse: 100%; Human: 100%; Bovine: 100%; Rat: 93%;
Mouse: 93%; Rabbit: 93%; Dog: 86%; Pig: 86%; Guinea pig: 86%

Protein Families: Transmembrane

Product images:



Host: Rabbit; Target Name: OS9; Sample Tissue:
Lung Tumor lysates; Antibody Dilution: 1.0 ug/ml