

Product datasheet for **TA335670**

RNF113A Rabbit Polyclonal Antibody

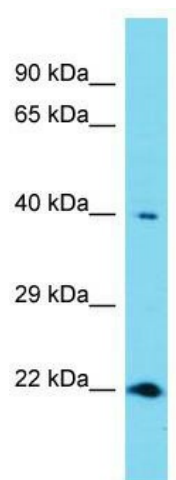
Product data:

Product Type:	Primary Antibodies
Applications:	WB
Recommended Dilution:	WB
Reactivity:	Human
Host:	Rabbit
Isotype:	IgG
Clonality:	Polyclonal
Immunogen:	The immunogen for Anti-RNF113A Antibody is: synthetic peptide directed towards the N-terminal region of Human RNF113A. Synthetic peptide located within the following region: VVRPEKRVTHNPMIQKTRDSGKQKAAYGDLSEEEEEENEPESLGVVYKS
Formulation:	Liquid. Purified antibody supplied in 1x PBS buffer with 0.09% (w/v) sodium azide and 2% sucrose. <i>Note that this product is shipped as lyophilized powder to China customers.</i>
Purification:	Affinity Purified
Conjugation:	Unconjugated
Storage:	Store at -20°C as received.
Stability:	Stable for 12 months from date of receipt.
Predicted Protein Size:	39 kDa
Gene Name:	ring finger protein 113A
Database Link:	NP_008909 Entrez Gene 7737 Human O15541
Background:	The exact function of RNF113A remains unknown.
Synonyms:	Cwc24; RNF113; TTD5; ZNF183
Note:	Immunogen Sequence Homology: Dog: 100%; Pig: 100%; Horse: 100%; Human: 100%; Bovine: 92%; Rat: 85%; Mouse: 85%
Protein Families:	Druggable Genome, Protease



[View online »](#)

Product images:



Host: Rabbit; Target Name: RNF113A; Sample
Tissue: Thyroid Tumor lysates; Antibody Dilution:
1.0 ug/ml