

Product datasheet for **TA335668**

Coronin 1a (CORO1A) Rabbit Polyclonal Antibody

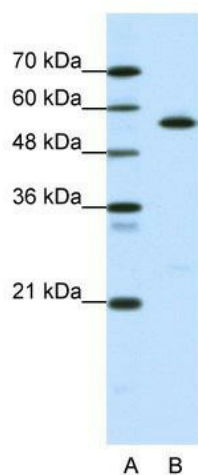
Product data:

Product Type:	Primary Antibodies
Applications:	WB
Recommended Dilution:	WB
Reactivity:	Human
Host:	Rabbit
Isotype:	IgG
Clonality:	Polyclonal
Immunogen:	The immunogen for Anti-CORO1A Antibody: synthetic peptide directed towards the middle region of human CORO1A. Synthetic peptide located within the following region: SVDWSRDGGLICTSCRDKRVRIIEPRKGTVVAEKDRPHEGTRPVRAVFVS
Formulation:	Liquid. Purified antibody supplied in 1x PBS buffer with 0.09% (w/v) sodium azide and 2% sucrose. <i>Note that this product is shipped as lyophilized powder to China customers.</i>
Purification:	Affinity Purified
Conjugation:	Unconjugated
Storage:	Store at -20°C as received.
Stability:	Stable for 12 months from date of receipt.
Predicted Protein Size:	51 kDa
Gene Name:	coronin 1A
Database Link:	NP_009005 Entrez Gene 11151 Human P31146
Background:	CORO1A forms homodimers. It plays a role in the cross-linking of F-actin in the cell.
Synonyms:	CLABP; CLIPINA; HCORO1; IMD8; p57; TACO
Note:	Immunogen Sequence Homology: Dog: 100%; Horse: 100%; Human: 100%; Pig: 93%; Mouse: 93%; Bovine: 93%; Rabbit: 93%; Guinea pig: 93%; Rat: 86%



[View online »](#)

Product images:



WB Suggested Anti-CORO1A Antibody Titration:
0.2-1 ug/ml; ELISA Titer: 1:312500; Positive
Control: Daudi cell lysate; CORO1A is supported
by BioGPS gene expression data to be expressed
in Daudi