

## Product datasheet for **TA335664**

### RNF2 Rabbit Polyclonal Antibody

#### Product data:

Product Type:	Primary Antibodies
Applications:	IHC, WB
Recommended Dilution:	WB, IHC
Reactivity:	Human
Host:	Rabbit
Isotype:	IgG
Clonality:	Polyclonal
Immunogen:	The immunogen for Anti-RNF2 Antibody: synthetic peptide directed towards the middle region of human RNF2. Synthetic peptide located within the following region: LVFRPHPTLMEKDDSAQTRYIKTSGNATVDHLSKYLAVRLALEELRSKGE
Formulation:	Liquid. Purified antibody supplied in 1x PBS buffer with 0.09% (w/v) sodium azide and 2% sucrose. <i>Note that this product is shipped as lyophilized powder to China customers.</i>
Purification:	Protein A purified
Conjugation:	Unconjugated
Storage:	Store at -20°C as received.
Stability:	Stable for 12 months from date of receipt.
Predicted Protein Size:	29 kDa
Gene Name:	ring finger protein 2
Database Link:	<a href="#">NP_009143</a> <a href="#">Entrez Gene 6045 Human</a> <a href="#">Q99496</a>
Background:	Polycomb group (PcG) of proteins form the multiprotein complexes that are important for the transcription repression of various genes involved in development and cell proliferation. The protein encoded by RNF2 is one of the PcG proteins. It has been shown to interact with, and suppress the activity of, transcription factor CP2 (TFCP2/CP2). This protein was also found to interact with huntingtin interacting protein 2 (HIP2), an ubiquitin-conjugating enzyme, and possess ubiquitin ligase activity.



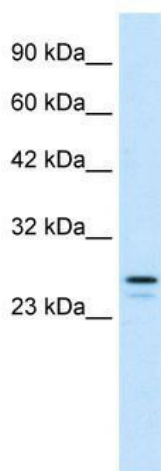
[View online »](#)

**Synonyms:** BAP-1; BAP1; DING; HIPI3; RING1B; RING2

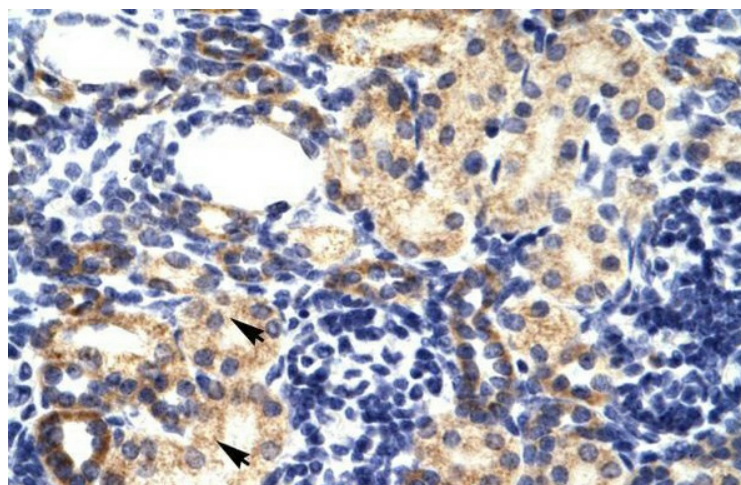
**Note:** Immunogen Sequence Homology: Dog: 100%; Pig: 100%; Rat: 100%; Horse: 100%; Human: 100%; Mouse: 100%; Bovine: 100%; Rabbit: 100%; Zebrafish: 100%; Guinea pig: 100%

**Protein Families:** Druggable Genome, Transcription Factors

**Product images:**



WB Suggested Anti-RNF2 Antibody Titration: 1.25 ug/ml; ELISA Titer: 1:312500; Positive Control: HepG2 cell lysate



Human kidney