

Product datasheet for **TA335662**

MTF2 Rabbit Polyclonal Antibody

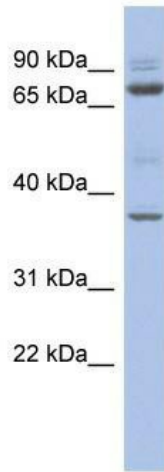
Product data:

Product Type:	Primary Antibodies
Applications:	WB
Recommended Dilution:	WB
Reactivity:	Human
Host:	Rabbit
Isotype:	IgG
Clonality:	Polyclonal
Immunogen:	The immunogen for Anti-MTF2 Antibody: synthetic peptide directed towards the middle region of human MTF2. Synthetic peptide located within the following region: FKAEKEPEGTSHEFKIKGRKASKPISDSREVSNGIEKKGKKKSVGRPPGP
Formulation:	Liquid. Purified antibody supplied in 1x PBS buffer with 0.09% (w/v) sodium azide and 2% sucrose. <i>Note that this product is shipped as lyophilized powder to China customers.</i>
Purification:	Affinity Purified
Conjugation:	Unconjugated
Storage:	Store at -20°C as received.
Stability:	Stable for 12 months from date of receipt.
Predicted Protein Size:	67 kDa
Gene Name:	metal response element binding transcription factor 2
Database Link:	NP_031384 Entrez Gene 22823 Human Q9Y483
Background:	MTF2 binds to the metal-regulating-element (MRE) of metallothionein-1A gene promoter. The binding is zinc-dependent.
Synonyms:	dj976O13.2; M96; PCL2; TDRD19A
Note:	Immunogen Sequence Homology: Dog: 100%; Pig: 100%; Rat: 100%; Horse: 100%; Human: 100%; Mouse: 100%; Rabbit: 100%; Bovine: 93%

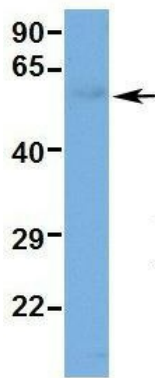


[View online »](#)

Protein Families: Druggable Genome, Transcription Factors

Product images:

WB Suggested Anti-MTF2 Antibody Titration: 0.2-1 ug/ml; ELISA Titer: 1:62500; Positive Control: THP-1 cell lysate

MTF2

Rabbit Anti-MTF2
Sample Type: Human Fetal Liver
Antibody Concentration: 1ug/mL

Hum. Fetal Liver

