

Product datasheet for **TA335661**

BRD3 Rabbit Polyclonal Antibody

Product data:

Product Type:	Primary Antibodies
Applications:	WB
Recommended Dilution:	WB
Reactivity:	Human
Host:	Rabbit
Isotype:	IgG
Clonality:	Polyclonal
Immunogen:	The immunogen for Anti-BRD3 Antibody: synthetic peptide directed towards the middle region of human BRD3. Synthetic peptide located within the following region: SGKKQAASKEELAQEKKKELEKRLQDVSGQLSSSKKPARKEKPGSAPSG
Formulation:	Liquid. Purified antibody supplied in 1x PBS buffer with 0.09% (w/v) sodium azide and 2% sucrose. <i>Note that this product is shipped as lyophilized powder to China customers.</i>
Purification:	Affinity Purified
Conjugation:	Unconjugated
Storage:	Store at -20°C as received.
Stability:	Stable for 12 months from date of receipt.
Predicted Protein Size:	79 kDa
Gene Name:	bromodomain containing 3
Database Link:	NP_031397 Entrez Gene 8019 Human Q15059
Background:	BRD3 gene was identified based on its homology to the gene encoding the RING3 protein, a serine/threonine kinase. The gene localizes to 9q34, a region which contains several major histocompatibility complex (MHC) genes. The function of this protein is not known. This gene was identified based on its homology to the gene encoding the RING3 protein, a serine/threonine kinase. The gene localizes to 9q34, a region which contains several major histocompatibility complex (MHC) genes. The function of the encoded protein is not known.



[View online »](#)

Synonyms: ORFX; RING3L

Note: Immunogen Sequence Homology: Dog: 100%; Pig: 100%; Rat: 100%; Horse: 100%; Human: 100%; Mouse: 100%; Bovine: 100%; Rabbit: 100%; Guinea pig: 100%; Zebrafish: 79%

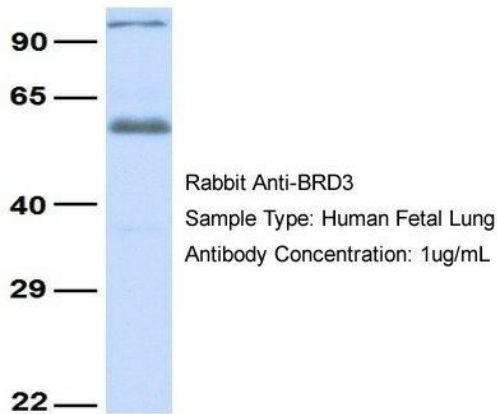
Protein Families: Protein Kinase

Product images:



WB Suggested Anti-BRD3 Antibody Titration: 0.2-1 ug/ml; ELISA Titer: 1:1562500; Positive Control: Human brain

BRD3



Host: Rabbit; Target Name: BRD3; Sample Tissue: Human Fetal Lung; Antibody Dilution: 1.0 ug/ml

