

Product datasheet for **TA335660**

Gad1 Rabbit Polyclonal Antibody

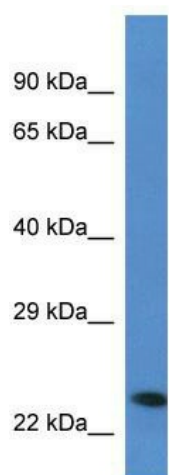
Product data:

Product Type:	Primary Antibodies
Applications:	IHC, WB
Recommended Dilution:	WB, IHC
Reactivity:	Human, Mouse
Host:	Rabbit
Isotype:	IgG
Clonality:	Polyclonal
Immunogen:	The immunogen for Anti-Gad1 Antibody: synthetic peptide directed towards the N terminal of human Gad1. Synthetic peptide located within the following region: TRKLGLKICGFLQRTNSLEEKSRSLVSAFRERQSSKNLLSCENS DQGARFR
Formulation:	Liquid. Purified antibody supplied in 1x PBS buffer with 0.09% (w/v) sodium azide and 2% sucrose. <i>Note that this product is shipped as lyophilized powder to China customers.</i>
Purification:	Affinity Purified
Conjugation:	Unconjugated
Storage:	Store at -20°C as received.
Stability:	Stable for 12 months from date of receipt.
Predicted Protein Size:	24 kDa
Gene Name:	glutamate decarboxylase 1
Database Link:	NP_032103 Entrez Gene 2571 Human Entrez Gene 14415 Mouse P48318
Background:	The function of this protein remains unknown.
Synonyms:	FLJ45882; GAD; GAD-67; GAD67; SCP
Note:	Immunogen Sequence Homology: Dog: 100%; Pig: 100%; Rat: 100%; Horse: 100%; Human: 100%; Mouse: 100%; Bovine: 100%; Rabbit: 100%; Guinea pig: 100%; Zebrafish: 79%

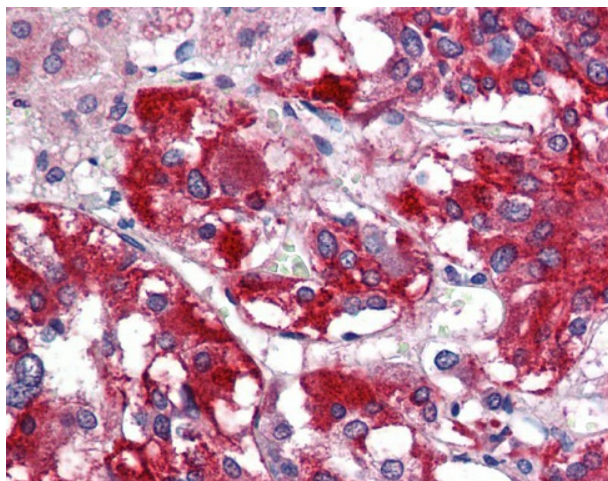


[View online »](#)

Product images:



WB Suggested Anti-Gad1 Antibody Titration: 1 ug/ml; Positive Control: Mouse Liver lysate



Adrenal