

Product datasheet for **TA335659**

Nbr1 Rabbit Polyclonal Antibody

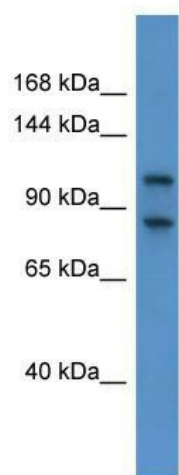
Product data:

Product Type:	Primary Antibodies
Applications:	WB
Recommended Dilution:	WB
Reactivity:	Human, Mouse
Host:	Rabbit
Isotype:	IgG
Clonality:	Polyclonal
Immunogen:	The immunogen for Anti-Nbr1 Antibody: synthetic peptide corresponding to a region of Mouse. Synthetic peptide located within the following region: PGLERGAEGEPGIESGLEPTEARERLPERESQPQEQSISDILTTSQPLDT
Formulation:	Liquid. Purified antibody supplied in 1x PBS buffer with 0.09% (w/v) sodium azide and 2% sucrose. <i>Note that this product is shipped as lyophilized powder to China customers.</i>
Purification:	Affinity Purified
Conjugation:	Unconjugated
Storage:	Store at -20°C as received.
Stability:	Stable for 12 months from date of receipt.
Predicted Protein Size:	109 kDa
Gene Name:	neighbor of Brca1 gene 1
Database Link:	NP_032702 Entrez Gene 4077 Human Entrez Gene 17966 Mouse P97432
Background:	Nbr1 acts probably as a receptor for selective autophagosomal degradation of ubiquitinated targets
Synonyms:	1A1-3B; 1A13B; CA125; FLJ55359; FLJ98272; KIAA0049; M1752; MIG19
Note:	Immunogen Sequence Homology: Human: 100%; Pig: 93%; Dog: 86%; Rat: 86%; Horse: 86%; Mouse: 86%; Bovine: 86%; Rabbit: 86%



[View online »](#)

Product images:



WB Suggested Anti-Nbr1 Antibody Titration: 0.2-1 ug/ml; ELISA Titer: 1: 1562500; Positive Control: Mouse Spleen