

## Product datasheet for **TA335658**

### Odf1 Rabbit Polyclonal Antibody

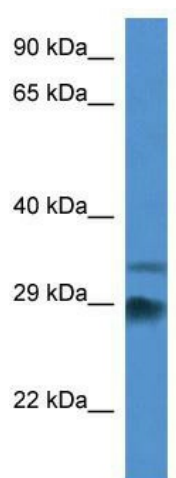
#### Product data:

Product Type:	Primary Antibodies
Applications:	WB
Recommended Dilution:	WB
Reactivity:	Mouse
Host:	Rabbit
Isotype:	IgG
Clonality:	Polyclonal
Immunogen:	The immunogen for Anti-Odf1 Antibody: synthetic peptide corresponding to a region of Mouse. Synthetic peptide located within the following region: VCGFEPDQVKVRVKDGKVCVSAERENRYDCLGSKKYSYMNICKEFSLPPC
Formulation:	Liquid. Purified antibody supplied in 1x PBS buffer with 0.09% (w/v) sodium azide and 2% sucrose.
Purification:	Affinity Purified
Conjugation:	Unconjugated
Storage:	Store at -20°C as received.
Stability:	Stable for 12 months from date of receipt.
Predicted Protein Size:	27 kDa
Gene Name:	outer dense fiber of sperm tails 1
Database Link:	<a href="#">NP_032783</a> <a href="#">Entrez Gene 18285 Mouse</a>
Background:	Odf1 is a component of the outer dense fibers (ODF) of spermatozoa. ODF are filamentous structures located on the outside of the axoneme in the midpiece and principal piece of the mammalian sperm tail and may help to maintain the passive elastic structures and elastic recoil of the sperm tail.
Synonyms:	HSPB10; MGC129928; MGC129929; ODF; ODF2; ODF27; ODFP; ODFPG; ODFPGA; ODFPGB; RT7; SODF
Note:	Immunogen Sequence Homology: Dog: 100%; Pig: 100%; Rat: 100%; Goat: 100%; Horse: 100%; Human: 100%; Mouse: 100%; Bovine: 100%; Rabbit: 100%; Guinea pig: 100%



[View online »](#)

## Product images:



WB Suggested Anti-Odf1 Antibody; Titration: 1.0 ug/ml; Positive Control: Mouse Heart