

Product datasheet for **TA335657**

Actl7a Rabbit Polyclonal Antibody

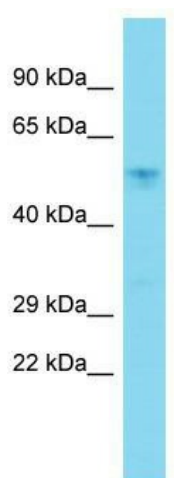
Product data:

Product Type:	Primary Antibodies
Applications:	WB
Recommended Dilution:	WB
Reactivity:	Mouse
Host:	Rabbit
Isotype:	IgG
Clonality:	Polyclonal
Immunogen:	The immunogen for Anti-Actl7a Antibody is synthetic peptide directed towards the middle region of Mouse Actl7a. Synthetic peptide located within the following region: VPIYEGYPLPSITGRLDYAGSDLTTYLMNLMNNSGKHFSEDHLGIVEDI
Formulation:	Liquid. Purified antibody supplied in 1x PBS buffer with 0.09% (w/v) sodium azide and 2% sucrose.
Purification:	Affinity Purified
Conjugation:	Unconjugated
Storage:	Store at -20°C as received.
Stability:	Stable for 12 months from date of receipt.
Predicted Protein Size:	48 kDa
Gene Name:	actin-like 7a
Database Link:	NP_033741 Entrez Gene 11470 Mouse Q9QY84
Background:	The function of this protein remains unknown.
Synonyms:	Actin-like-7-alpha
Note:	Immunogen Sequence Homology: Dog: 100%; Pig: 100%; Human: 100%; Rabbit: 100%; Guinea pig: 100%; Rat: 93%; Horse: 93%; Mouse: 93%; Bovine: 93%



[View online »](#)

Product images:



Host: Rabbit; Target Name: Actl7a; Sample
Tissue: Mouse Liver lysates; Antibody Dilution: 1.0
ug/ml