

Product datasheet for **TA335656**

I15 Rabbit Polyclonal Antibody

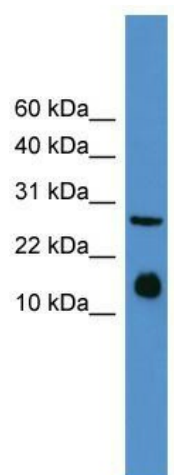
Product data:

Product Type:	Primary Antibodies
Applications:	WB
Recommended Dilution:	WB
Reactivity:	Mouse
Host:	Rabbit
Isotype:	IgG
Clonality:	Polyclonal
Immunogen:	The immunogen for Anti-I15 Antibody: synthetic peptide corresponding to a region of Mouse. Synthetic peptide located within the following region: MEIPMSTVVKETLTQLSAHRALLTSNETMRLPVPVTHKNHQLCIGEIFQGL
Formulation:	Liquid. Purified antibody supplied in 1x PBS buffer with 0.09% (w/v) sodium azide and 2% sucrose. <i>Note that this product is shipped as lyophilized powder to China customers.</i>
Purification:	Affinity Purified
Conjugation:	Unconjugated
Storage:	Store at -20°C as received.
Stability:	Stable for 12 months from date of receipt.
Predicted Protein Size:	15 kDa
Gene Name:	interleukin 5
Database Link:	NP_034688 Entrez Gene 16191 Mouse P04401
Background:	The function of I15 remains unknown.
Synonyms:	EDF; IL-5; interleukin-5; TRF
Note:	Immunogen Sequence Homology: Human: 100%; Rabbit: 93%; Pig: 86%; Rat: 86%; Guinea pig: 86%; Mouse: 79%



[View online »](#)

Product images:



WB Suggested Anti-IL5 Antibody Titration: 0.2-1 ug/ml; ELISA Titer: 1: 312500; Positive Control: Mouse Spleen