

## Product datasheet for **TA335654**

### CERD4 (DPF3) Rabbit Polyclonal Antibody

#### Product data:

Product Type:	Primary Antibodies
Applications:	WB
Recommended Dilution:	WB
Reactivity:	Human
Host:	Rabbit
Isotype:	IgG
Clonality:	Polyclonal
Immunogen:	The immunogen for Anti-DPF3 Antibody: synthetic peptide directed towards the middle region of human DPF3. Synthetic peptide located within the following region: KDGFTSESTTLEALLRGEGVEKKVDAREEESIQEIQRVLENDEVVEEGNE
Formulation:	Liquid. Purified antibody supplied in 1x PBS buffer with 0.09% (w/v) sodium azide and 2% sucrose. <i>Note that this product is shipped as lyophilized powder to China customers.</i>
Purification:	Affinity Purified
Conjugation:	Unconjugated
Storage:	Store at -20°C as received.
Stability:	Stable for 12 months from date of receipt.
Predicted Protein Size:	40 kDa
Gene Name:	double PHD fingers 3
Database Link:	<a href="#">NP_036206</a> <a href="#">Entrez Gene 8110 Human</a> <a href="#">Q92784</a>
Background:	DPF3 is a muscle-specific component of the BAF complex, a multiprotein complex involved in transcriptional activation and repression of select genes by chromatin remodeling (alteration of DNA-nucleosome topology). DPF3 specifically binds acetylated lysines on histone 3 and 4 (H3K14ac, H3K9ac, H4K5ac, H4K8ac, H4K12ac, H4K16ac). In the complex, it acts as a tissue-specific anchor between histone acetylations and methylations and chromatin remodeling. It thereby probably plays an essential role in heart and skeletal muscle development.



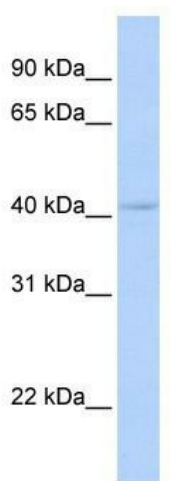
[View online »](#)

**Synonyms:** BAF45C; CERD4

**Note:** Immunogen Sequence Homology: Pig: 100%; Rat: 100%; Horse: 100%; Human: 100%; Mouse: 100%; Rabbit: 100%; Guinea pig: 100%; Dog: 93%; Bovine: 93%

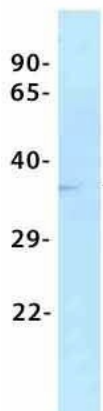
**Protein Families:** Transcription Factors

**Product images:**



WB Suggested Anti-DPF3 Antibody Titration: 0.2-1 ug/ml; ELISA Titer: 1:12500; Positive Control: MCF7 cell lysate

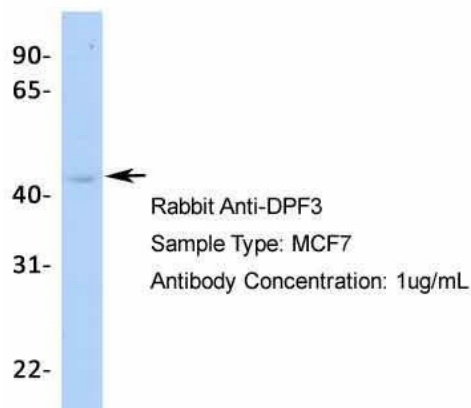
**DPF3**



← Rabbit Anti-DPF3  
 Sample Type: HT1080  
 Antibody Concentration: 1ug/mL

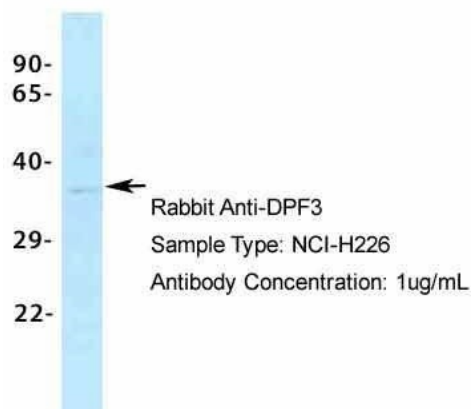
Host: Rabbit; Target Name: DPF3; Sample Tissue: HT1080; Antibody Dilution: 1.0 ug/ml

### DPF3



Host: Rabbit; Target Name: DPF3; Sample Tissue: MCF7; Antibody Dilution: 1.0 ug/ml

### DPF3



Host: Rabbit; Target Name: DPF3; Sample Tissue: NCI-H226; Antibody Dilution: 1.0 ug/ml; DPF3 is supported by BioGPS gene expression data to be expressed in NCIH226