

Product datasheet for **TA335653**

TKTL1 Rabbit Polyclonal Antibody

Product data:

Product Type:	Primary Antibodies
Applications:	IHC, WB
Recommended Dilution:	WB, IHC
Reactivity:	Human
Host:	Rabbit
Isotype:	IgG
Clonality:	Polyclonal
Immunogen:	The immunogen for Anti-TKTL1 Antibody: synthetic peptide directed towards the middle region of human TKTL1. Synthetic peptide located within the following region: QIQTSRNLDPPPIEDSPEVNITDVRMTSPDPYRVGDKIATRKACGLALA
Formulation:	Liquid. Purified antibody supplied in 1x PBS buffer with 0.09% (w/v) sodium azide and 2% sucrose. <i>Note that this product is shipped as lyophilized powder to China customers.</i>
Purification:	Affinity Purified
Conjugation:	Unconjugated
Storage:	Store at -20°C as received.
Stability:	Stable for 12 months from date of receipt.
Predicted Protein Size:	65 kDa
Gene Name:	transketolase-like 1
Database Link:	NP_036385 Entrez Gene 8277 Human P51854
Background:	Strong TKTL1 protein expression has been correlated with a certain type of glucose metabolism (aerobic glycolysis; Warburg effect) and to cells which are affected by chronic complications of diabetic patients. In colon and urothelial carcinomas, expression at the protein level is correlated with invasiveness of tumors and poor patient survival.
Synonyms:	TKR; TKT2



[View online »](#)

Note: Immunogen Sequence Homology: Human: 100%; Mouse: 85%; Dog: 83%; Pig: 79%; Guinea pig: 79%; Rat: 77%; Horse: 77%; Rabbit: 77%

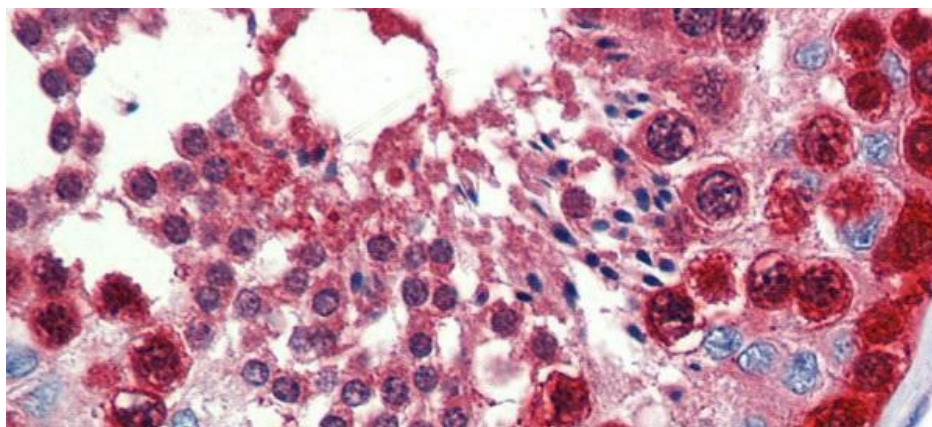
Protein Families: Druggable Genome

Protein Pathways: Metabolic pathways, Pentose phosphate pathway

Product images:



WB Suggested Anti-TKTL1 Antibody Titration: 1 ug/ml; Positive Control: Fetal Stomach cell lysate



Immunohistochemistry with Human Testis lysate tissue at an antibody concentration of 5.0 ug/ml using anti-TKTL1 antibody