

Product datasheet for **TA335651**

STAG3 Rabbit Polyclonal Antibody

Product data:

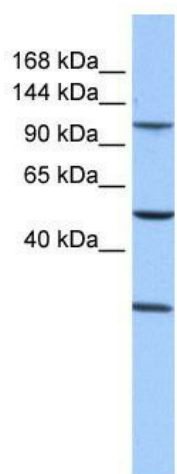
Product Type:	Primary Antibodies
Applications:	WB
Recommended Dilution:	WB
Reactivity:	Human
Host:	Rabbit
Isotype:	IgG
Clonality:	Polyclonal
Immunogen:	The immunogen for Anti-STAG3 Antibody: synthetic peptide directed towards the middle region of human STAG3. Synthetic peptide located within the following region: VPHQVILPALTLVYFSILWTLTHISKSDASQKQLSSLRDRMVAFCELCQS
Formulation:	Liquid. Purified antibody supplied in 1x PBS buffer with 0.09% (w/v) sodium azide and 2% sucrose.
Purification:	Affinity Purified
Conjugation:	Unconjugated
Storage:	Store at -20°C as received.
Stability:	Stable for 12 months from date of receipt.
Predicted Protein Size:	135 kDa
Gene Name:	stromal antigen 3
Database Link:	NP_036579 Entrez Gene 10734 Human Q9UJ98
Background:	STAG3 is a meiosis specific component of cohesin complex. The cohesin complex is required for the cohesion of sister chromatids after DNA replication. The cohesin complex apparently forms a large proteinaceous ring within which sister chromatids can be trapped. At anaphase, the complex is cleaved and dissociates from chromatin, allowing sister chromatids to segregate. The meiosis-specific cohesin complex probably replaces mitosis specific cohesin complex when it dissociates from chromatin during prophase I.
Synonyms:	POF8


[View online »](#)

Note: Immunogen Sequence Homology: Human: 100%; Zebrafish: 83%

Protein Pathways: Oocyte meiosis

Product images:



WB Suggested Anti-STAG3 Antibody Titration: 0.2-1 ug/ml; Positive Control: 721_B cell lysate. STAG3 is supported by BioGPS gene expression data to be expressed in 721_B