

Product datasheet for **TA335650**

TBL2 Rabbit Polyclonal Antibody

Product data:

Product Type:	Primary Antibodies
Applications:	WB
Recommended Dilution:	WB
Reactivity:	Human
Host:	Rabbit
Isotype:	IgG
Clonality:	Polyclonal
Immunogen:	The immunogen for Anti-TBL2 Antibody: synthetic peptide directed towards the N terminal of human TBL2. Synthetic peptide located within the following region: RSGRPACQKANGFPPDKSSGSKKQKQYQRIRKEKPQQHNFTHRLAAALK
Formulation:	Liquid. Purified antibody supplied in 1x PBS buffer with 0.09% (w/v) sodium azide and 2% sucrose. <i>Note that this product is shipped as lyophilized powder to China customers.</i>
Purification:	Affinity Purified
Conjugation:	Unconjugated
Storage:	Store at -20°C as received.
Stability:	Stable for 12 months from date of receipt.
Predicted Protein Size:	49 kDa
Gene Name:	transducin (beta)-like 2
Database Link:	NP_036585 Entrez Gene 26608 Human Q9Y4P3



[View online »](#)

Background:

TBL2 is a member of the beta-transducin protein family. Most proteins of the beta-transducin family are involved in regulatory functions. This protein is possibly involved in some intracellular signaling pathway. This gene is deleted in Williams-Beuren syndrome, a developmental disorder caused by deletion of multiple genes at 7q11.23. This gene encodes a member of the beta-transducin protein family. Most proteins of the beta-transducin family are involved in regulatory functions. This protein is possibly involved in some intracellular signaling pathway. This gene is deleted in Williams-Beuren syndrome, a developmental disorder caused by deletion of multiple genes at 7q11.23.

Synonyms:

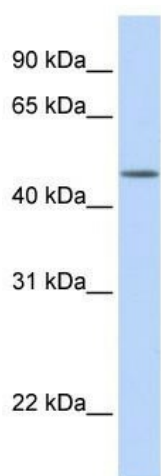
WBSCR13; WS-betaTRP

Note:

Immunogen Sequence Homology: Human: 100%; Horse: 86%; Rabbit: 86%; Mouse: 85%

Protein Families:

Transmembrane

Product images:

WB Suggested Anti-TBL2 Antibody Titration: 0.2-1 ug/ml; Positive Control: Human brain