

## Product datasheet for **TA335648**

### **DNAAF11 Rabbit Polyclonal Antibody**

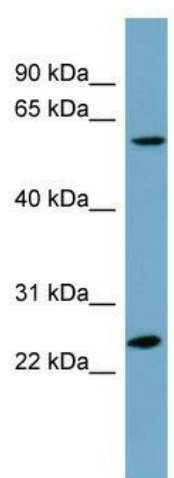
#### **Product data:**

<b>Product Type:</b>	Primary Antibodies
<b>Applications:</b>	WB
<b>Recommended Dilution:</b>	WB
<b>Reactivity:</b>	Human
<b>Host:</b>	Rabbit
<b>Isotype:</b>	IgG
<b>Clonality:</b>	Polyclonal
<b>Immunogen:</b>	The immunogen for Anti-LRRC6 Antibody: synthetic peptide directed towards the N terminal of human LRRC6. Synthetic peptide located within the following region: LNLALNNIEK IENLEGCEELAKLDLTVNFIGELSSIKNLQHN IHLKELFL
<b>Formulation:</b>	Liquid. Purified antibody supplied in 1x PBS buffer with 0.09% (w/v) sodium azide and 2% sucrose. <i>Note that this product is shipped as lyophilized powder to China customers.</i>
<b>Purification:</b>	Affinity Purified
<b>Conjugation:</b>	Unconjugated
<b>Storage:</b>	Store at -20°C as received.
<b>Stability:</b>	Stable for 12 months from date of receipt.
<b>Predicted Protein Size:</b>	51 kDa
<b>Gene Name:</b>	leucine rich repeat containing 6
<b>Database Link:</b>	<a href="#">NP_036604</a> <a href="#">Entrez Gene 23639 Human</a> <a href="#">Q86X45</a>
<b>Background:</b>	LRRC6 may be involved in spermatocytogenesis or prophase of meiosis.
<b>Synonyms:</b>	CILD19; LRTP; TSLRP
<b>Note:</b>	Immunogen Sequence Homology: Human: 100%; Dog: 93%; Pig: 86%; Horse: 86%; Guinea pig: 86%; Rat: 79%; Mouse: 79%; Bovine: 79%; Rabbit: 79%



[View online »](#)

## Product images:



WB Suggested Anti-LRRC6 Antibody Titration: 0.2-1 ug/ml; ELISA Titer: 1: 312500; Positive Control: PANC1 cell lysate